



Your Philanthropy  
Our Community  
Better Together

2012-2013  
ANNUAL REPORT

imagine

BRIGHTER **FUTURES**. VIBRANT **COMMUNITIES**.  
THRIVING **FAMILIES**. HEALTHY **CHILDREN**. SHARING  
**PASSIONS**. MAKING A **DIFFERENCE**. WORKING  
**TOGETHER**. **GIVING** TODAY. EXCHANGING  
**IDEAS**. CREATING **OPPORTUNITIES**. ENGAGING  
**COMMUNITIES**. LEAVING A **LEGACY**. MAKING  
**DREAMS** COME TRUE. **TRANSFORMING** LIVES.

the possibilities together.

# 2012-2013 at a glance

Total Assets **\$151,194,764** Total Contributions Received **\$7,660,960**

New Funds **9** Grants Awarded **\$6,475,373**

Largest Grant **\$661,203** Total Funds **294**

## who we are...

### OUR VISION & MISSION

*To facilitate informed philanthropy and together, with our donors, serve as the leading catalyst for building vibrant communities.*

### WE DO THIS BY:

1. Connecting donors to needs and causes that are meaningful to them.
2. Investing donors' funds strategically to achieve lasting results.
3. Leading collaborative solutions to community issues.

**Our Values** serve as the guiding principles that shape and inform the way we approach our work, every day and always.

- **Integrity:** We uphold the public trust placed in us and practice the highest ethical standards. We honor our commitments, remain objective and transparent and are respectful of our stakeholders.
- **Passion:** We believe in, practice and lead by example the vision and mission of the Foundation to inspire philanthropy in order to strengthen our communities.
- **Inclusion:** We respect and embrace the contributions, experiences and perspectives of all members of our communities.
- **Collaboration:** We value the power of partnerships with volunteers, community leaders, and civic and non-profit organizations to provide programs, services and solutions that benefit our residents and communities.
- **Sustainability:** We build a legacy for future generations through responsible and thoughtful stewardship of the resources entrusted to us.
- **Innovation:** We pursue information and new approaches to stay informed and engaged to address our community needs and our donors' intent.

**National Standards** The Community Foundation meets the nation's highest philanthropic standards for operational quality, integrity and accounting. We join an elite group of community foundations nationwide to be confirmed in compliance with the National Standards for U.S. Community Foundations.



Confirmed in Compliance with National  
Standards for U.S. Community Foundations

imagine... A BRIGHTER FUTURE.  
imagine... A STRONGER COMMUNITY.  
imagine... CARING FOR YOUR NEIGHBORS.  
imagine... REALIZING YOUR PASSIONS.



The theme of our annual report is *Imagine the Possibilities....Together*. And we want you to imagine the impact you have with your philanthropy, right now and forever. By partnering together, possibilities become realities and they can be seen in children that succeed, families that thrive, communities that become stronger and lives that change.

As you read the stories in our annual report, our hope is you will see all the promise that is possible with your philanthropy. Just like you, every donor featured in these stories was inspired to make a difference. You are helping our communities prosper and we are deeply honored to be your philanthropic partner so you can make a greater impact.

The Community Foundation had many exciting events happen last year. In January, we celebrated four decades of inspiring philanthropy and working with you to strengthen our community. We honored this milestone by producing a video that showcased our donors, which can be viewed on our website.

In September 2013, we welcomed Brad Hurlburt as our new President and CEO. Brad is a passionate community advocate and joins us with 30 years of significant philanthropic experience. We are excited about the Foundation's future under his leadership.

Lastly, as you can see, the Community Foundation has a new look. Keeping our donors in the forefront and knowing that all we accomplish is because of you and your generosity, we wanted our new logo and tagline to reflect this. Our new tagline – **Your Philanthropy. Our Community. Better Together.** – exemplifies the possibilities we can make happen together.

Thank you for allowing us to help you realize all your charitable possibilities.

*Deborah Dale Pucillo*

Deborah Dale Pucillo  
Board Chair

# board listing

## OFFICERS

Deborah Dale Pucillo, *Chair*

Sally Gingras, *Vice Chair*

J.B. Murray, *Vice Chair*

Douglas A. Stockham, *Vice Chair*

Steven A. Templeton, *Treasurer*

Lawrence J. Miller, *Secretary*

William M. Matthews, *Immediate Past Chair*

Bradley A. Hurlburt, *President and CEO*

Anson M. Beard, Jr.

Ray S. Celedinas†

Pedro del Sol

Lore Moran Dodge†

George T. Elmore

Kathleen B. Emmett

Katherine P. Goldsmith

Paulette Koch

Kathleen J. Kroll

Andrew Kushner

Christina M. Macfarland†

Peter Matwiczuk

Lisa N. Mulhall

David G. Ober

James F. Orr, III\*

Virginia H. Smith

Caroline B. Sory†

Royall Victor, III\*

Roy J. Zuckerberg

†New Board Members

\*Retired Board Members

## STAFF LISTING

Bradley A. Hurlburt, *President and CEO*

## FINANCE & ADMINISTRATION

Gloria Ortega Rex, CPA, MBA,  
*Vice President for Finance and Administration*

Sue Sharra, *Controller*

Sandra Mari, *Accounting Specialist/  
Facilities Coordinator*

Sandra Reid, *Administrative Assistant*

## DEVELOPMENT

Danielle Blangy Cameron, CAP®,  
*Vice President for Personal and  
Family Philanthropy*

C. Bonnie Mitchell, *Donor Services Officer*

## COMMUNITY INVESTMENT

Jillian C. Vukusich, CAP®,  
*Vice President for Community Investment*

Daryl Houston,  
*Community Investment Officer*

Patricia Carter,  
*Grants and Scholarship Administrator*

## MARKETING & COMMUNICATIONS

Jennifer Sullivan, *Director of Marketing  
and Communications*



*"Partnering with the Community Foundation by providing a grant to DonorsChoose.org was an innovative way to maximize our support and help as many students and educators as possible."*

*Due to school cutbacks, teachers often lack extra resources to provide new and creative learning projects. With our support and the help of others, we provided important teaching and learning tools which otherwise might not be available to students."*

– SANDRA GAMBILL, DIRECTOR  
The Walter and Adi Blum Foundation

*Palm Beach and Martin County students are all smiles thanks to the generosity of the donors of the Community Foundation for supporting their classroom projects.*

# imagine...

## INSPIRING YOUR COMMUNITY

When The Walter and Adi Blum Foundation partnered with the Community Foundation and donated \$15,000 to DonorsChoose.org, they knew it was an opportunity to support children and inspire our community to get involved.

With a longstanding commitment to education, the Community Foundation invested \$100,000 in DonorsChoose.org to support Palm Beach and Martin County classroom projects. We asked our community to help double the impact and pledged to match their donations dollar for dollar. And they came through in a big way. The Blum Foundation, together with our donors and other philanthropists, helped us raise nearly \$200,000 to fund 383 classroom projects that reached over 35,000 students.

DonorsChoose.org is an online charity that makes it easy to help students in need. It provides a unique

way for teachers to request supplies – anything from new books to science materials – and for donors to support projects.

**The Community Foundation's \$100,000 investment was made possible by The John D. and Catherine T. MacArthur Fund, an Endowed Fund of the Foundation.**

383 classroom projects  
+ 35k students  
= \$200,000



# imagine...

## SHARING YOUR PASSIONS



It all started when Kent and Loy Anderson hosted a "dutch treat" party. With more guests attending than expected and money left on the table, there was only one thing to do. Donate it to charity. That's when The Paradise Fund started to take shape.

With inspiration from their father to always give back, The Paradise Fund has helped many charitable organizations that focus on underprivileged children. Through fundraising events like The Paradise Casino, they have raised money to support local and international nonprofits, including building a children's community center in Haiti.



As The Paradise Fund has grown, Kent and Loy have been empowering a younger generation to join them. It isn't enough to have guests attend their events – they want them to get involved and see the impact of their generosity. The lessons learned from their father are now, in turn, inspiring philanthropy in others. And the result is only greater possibilities.

Kent and Loy reached out to the Community Foundation and established a Donor Advised Fund to help them manage their dollars and grant making. Their goal is to grow the fund over time to allow them to support more children and organizations.



**Loy and Kent Anderson, founders of The Paradise Fund, with volunteers and students in Haiti.**

Photo credit: Seth Browarnik/WorldRedEye.com



Daniel O'Connell, Crystian Cepeda, 2013 Philip D. O'Connell, Sr. Memorial Scholarship Fund recipient, and Dave Aronberg, State Attorney.

# imagine...

## MAKING DREAMS COME TRUE

When the Philip D. O'Connell, Sr. Memorial Scholarship Fund was established at the Community Foundation in 1988, Mr. O'Connell's wife wanted the scholarship awards to be more than a dollar amount. She wanted to meet the students and their parents and tell them about her husband, a former State Attorney in Palm Beach County. The simple luncheon she started many years ago has evolved into a full day to learn about the man behind the scholarship and the community he loved.

This annual tradition is now carried on by Mrs. O'Connell's son, Daniel O'Connell. Every year, the scholarship winner takes a field trip to the State Attorney's office, where a bust of Mr. O'Connell is displayed, and then visits the Richard and Pat

Johnson Palm Beach County History Museum in West Palm Beach.

**Together with our donors, the Community Foundation awarded \$726,500 in scholarships to 89 students in Palm Beach and Martin Counties in May 2013. Since 1983, over \$7.5 million in scholarships have been awarded to nearly 1,700 students. Scholarship Funds are often established to honor or memorialize a loved one.**

*Achieving a college degree increases a person's earning potential by more than a million dollars over their lifetime.*



# imagine...

## WORKING TOGETHER TO BUILD FUTURES

*"Through this partnership with the Community Foundation and CredAbility, Citi Foundation's aim is to provide practical tools and financial knowledge to students and their families so they have a better chance at being successful. Students are bombarded with situations involving their finances and if we can teach them to make sound decisions, they have an increased chance of graduating college on a solid financial footing."*

– RAMON RODRIGUEZ,  
COMMUNITY OFFICER  
Citi Community  
Development

It was a daunting task for Cristobal Cabrera and his parents to prepare for the financial realities of college. Although they thought they understood what was ahead for their son, the Cabrerases realized there was more to learn. They knew Cristobal needed to understand the impact of the financial decisions he makes while in college.

The Community Foundation, Citi Foundation, and CredAbility, a leading national provider of credit counseling and education, partnered to educate new college-bound students about the financial realities facing them. The goal was to arm them with enough knowledge now so they'll make sound financial choices while in college and be in the best possible financial situation when they graduate.

The Financial Education for Students initiative was launched in June after the Community Foundation received a \$50,000 grant from Citi Foundation. The grant was used to provide financial education counseling from CredAbility to the Community Foundation's 2013 scholarship recipients and applicants. Group sessions were held for students and their parents and one-on-one counseling was provided to the scholarship recipients.



© 2013 LILA PHOTO





*Palm Beach County educators attended a three-day seminar to transform their STEM teaching practices.*

# imagine...

## PARTNERING TO TRANSFORM EDUCATION

The path to building a 'world class' educational program in the Science, Technology, Engineering and Mathematics subject areas, or STEM as it's commonly referred to, started with an unprecedented partnership. The School District of Palm Beach County, the University of Florida, along with the Community Foundation, the Mary and Robert Pew Public Education Fund and the Quantum Foundation joined together to launch a three-year initiative to build a stellar STEM educational program in Palm Beach County.

The Community Foundation, the Mary and Robert Pew Public Education Fund and the Quantum Foundation funded the launch of the initiative – providing over \$1 million collectively in grants. The Community Foundation's support represents the largest grant in our history – \$661,203 over a two-year period.

This ambitious effort will transform teaching practices and student learning in the STEM subjects and will benefit thousands of teachers and students. UF and school district officials expect the initiative to improve school culture, teacher quality, student learning and higher performance on STEM assessment evaluations.

The Community Foundation is committed to working together with community partners to identify issues and design solutions.

**The Community Foundation's grant was funded by the John D. and Catherine T. MacArthur Fund, an Endowed Fund of the Foundation. The Mary and Robert Pew Public Education Fund is a Supporting Organization of the Community Foundation.**

# imagine...

## GIVING NOW. GIVING FOREVER.

Legacy is the ongoing joy of giving. It's imagining and realizing possibilities...forever. And that's the power of endowment. A donor's charitable passions are realized long after they have gone.



**Mary and Hans Stratmann**

In 1997, the Hans and Mary Stratmann Fund was established at the Community Foundation in honor of the former Boca residents. In December 2012, the Fund awarded two \$100,000 grants to support homeless women and foster youth. Their generosity and legacy lives on in every person that walks through the doors of

The Lord's Place's new Burckle Place and Villages of Hope's new community room.

The Lord's Place's new Burckle Place is the first and only housing program in the community designed to exclusively meet the long-term needs of single, homeless women who are not victims of domestic violence and do not have a mental illness or substance abuse problem. The Lord's Place is dedicated to breaking the cycle of homelessness by providing innovative and compassionate services to men, women and children in our community.

Villages of Hope is an independent living, residential support and essential life-skills development for emancipated foster youth and homeless youth in need. Related to Place of Hope, an organization providing family-style foster care and outreach services, Villages of Hope is a new community in Palm Beach County that provides a unique living environment to promote self-sufficiency for at-risk youth.

**The Hans and Mary Stratmann Fund is an endowed Field of Interest Fund of the Community Foundation. Since its inception, the Stratmann Fund has supported over 100 organizations and awarded \$2.8 million in grants.**



© 2013 LILA PHOTO

**Diana Stanley, CEO, The Lord's Place with Burckle Place resident, Susan Cooper and Val Santiago Stanley, Burckle Place program director.**



© 2013 LILA PHOTO

**Charles Bender, Executive Director, Place of Hope with Villages of Hope resident, Monique McMillian.**





© 2013 LILA PHOTO

*"Establishing an agency endowment is a giant step in solidifying our future in serving the community. We have grown tremendously over the last 23 years helping thousands of families, and I am thrilled to say we will be able to continue helping those who are in need."*

– JULIE SWINDLER, LCSW, CEO  
Families First of Palm Beach County

**Julie Swindler, CEO of Families First of Palm Beach County with Marla Samuels and her daughter, Daniyah Donalds.**

# imagine...

## HELPING PEOPLE FOREVER

Life hasn't always been easy for Marla Samuels. After a difficult childhood, she faced many hardships as a young adult, including becoming pregnant, being unemployed and dealing with depression. It wasn't until Marla sought the help of Families First of Palm Beach County that her life began to change.

Today, Marla is a different woman because of Families First's Healthy Families Program. She learned new parenting skills and how to manage her stress. Marla became a legal resident, enrolled in nursing school and now works full time. All her efforts to improve her life paid off when she received the Chris Evert Vitas Gerulaitis Scholarship to continue her education. Marla is on a path of self sufficiency because of Families First.

There will be many stories just like Marla's and the needs will always be there when a child, individual or family endures unexpected hardship. Families First is planning ahead to ensure they can provide their programs and services forever. They recently established an Agency Endowment Fund at the Community Foundation to help sustain their future and provide a stable, predictable source of income. And just like families who put away money for future needs, Families First is saving to help people forever.

**The Community Foundation manages funds permanently endowed by donors for the benefit of a specific charitable cause. In the case of Agency Endowments, the cause is the organization itself.**



*Winsome McIntosh & Edward Rodgers*



*Former Board Chairs, William Benjamin, II, William M. Matthews, Patricia Carry Stewart, Tom A. Giuffrida, John B. Dodge, Edward Rodgers, Eliot I. Snider*



*The Henry Morrison Flagler Museum*  
PHOTOS: LUCIEN CAPEHART PHOTOGRAPHY



*Honorary Chairs, Thomas Quick and Talbott Maxey*



*Gala Junior Chairs, Benjamin and Christina Macfarland;  
Gala Chairs, Angela and Douglas Stockham*



*Rockin' Dopsie & The Zydeco Twisters*

# imagine...

## CELEBRATING YOUR GENEROSITY

Friends of the Community Foundation joined us at our 40th Anniversary Gala, An Evening in the Vieux Carre, at the Flagler Museum on January 24th to celebrate philanthropy. The Gala was a tribute to our founders, Winsome and Michael McIntosh, former Board Chairs and our donors. Proceeds from the Gala support the Community Foundation's efforts to address the challenges affecting our communities.



# WAYS YOU CAN give

There are several ways you can give. Support a cause or community you passionately care about. Create a family tradition of giving. Honor a loved one's memory. Or you can give directly to organizations of your choice through a Donor Advised Fund. There are many reasons you might be inspired to establish a fund at the Community Foundation and we have many charitable options that can be personally designed for you.

# leave A LEGACY

We can help you create a lasting legacy. Include the Community Foundation in your will or estate plan and leave a gift that will forever support those causes that are meaningful to you. You can leave a specific dollar amount or use a variety of assets to make a planned gift and accomplish your charitable goals.

# support THE COMMUNITY FOUNDATION

You can make a contribution to the Community Foundation to support our work in the community. We address our community's most pressing needs – like hunger, housing and education – and work closely with our community partners to develop solutions.



# the legacy society

*The Legacy Society recognizes those donors who have included the Foundation in their planned and estate gifts. Through their thoughtful generosity these donors have created a legacy to ensure the future vitality of our community.*

Mr. and Mrs. William E. Benjamin II

Gail and Stig\* Bjork

Mr. Robert Bodington

William J. Bryant, D.D.S.

Danielle Blangy Cameron

Barbara Bishop Chapin

Mr. and Mrs. Donald Dahlberg

Mr. Daniel E. Drennen II

Ms. Carol DuBois

Mai \* and Dr. William Earnhart

Dr. and Mrs.\* Robert W. Eddleman

Ms. Diane M. Freaney CPA

Marilyn and Robert P.\* Gatewood

Mr. and Mrs. Barry H. Goldman

Jane and Gene J.\* Guttman

Mr. and Mrs. Kenneth L. Groves

Mrs. Jean H. Harris

Mr. and Mrs. Patrick Henry



**William Benjamin**



**Dr. Dorothy Adams Peck**

Mr. Thornton M. Henry

Mrs. Phyllis Hopman

Mrs. Shannon Sadler Hull

Abby Gelles Knott

Brenda M. Magee, Ed.D.

Mrs. Connie McEvoy

Mrs. Mark M. McShurley

Dr. Dorothy Adams Peck

Mr. Warren Resen

The Hon. Edward Rodgers

Mr. Melvin Roth

Mr. Leon M. Rubin

Mr. and Mrs. Frederick Runkel

Carol and Dr. Irving R.\* Rutkin

Mr. and Mrs. Kenneth L. Shepard

Mrs. Florence Trefry

Anonymous (9)

\* Deceased

# funds at the community foundation for palm beach and martin counties

## Discretionary Funds

*Many donors have established funds that are totally unrestricted or have broad purposes, giving the Community Foundation flexibility in the way the income is used. They provide support to programs that address a broad range of community needs. The year the fund was established is listed in parentheses.*

Sheldon B. Ackerman Fund (1977)  
William E. Benjamin, II Unrestricted Fund (1986)  
Robert A. Butler Estate and Dr. Richard H. Butler Fund (1996)  
Julian and Eunice S. Cohen Fund (1986)  
Community Impact Fund (1972)  
Dreyfoos Fund (1986)  
Mary D. Fisher Fund (2009)  
Mary Jane Grant Fund (1987)  
Alfred and Elizabeth Kay Memorial Fund (1992)  
Joyce Lanier Milner Fund (1989)  
Marcelle Hull Liffell (1999)  
Daniel J. Mahoney, Jr. Fund (1984)  
Marie Graber Martens Fund (1990)  
C. Charles Marran Charitable Fund (2008)  
Alma Lu Meerdink Fund (2007)  
Nan Ourisman Fund (2000)  
Charles and Catherine Schmidt Fund (1995)  
Allan E. and Carol T. Shore Fund (1999)  
James R. and Gladys R. Smith Fund (2008)  
The Sorrel Ross Bollet Endowment Fund (1997)  
Alexander and Mildred Valuzis Fund (2000)  
Herbert Weber Fund (1990)  
Fred P. and Sophia D. Weissman Unrestricted Fund (1988)

## Field of Interest Funds

*The following funds are directed to a particular issue or area of concern established by families or organizations who want to honor loved ones by naming a fund for them. The year the fund was established is listed in parentheses.*

ALS Awareness and Education Fund (1992)  
Henry and Mildred Baldwin Memorial Endowment Fund (1992)  
Community Experience Partnership (2008)  
Community Fund to End Homelessness in Palm Beach County (2009)  
The Environmental Fund (2002)  
Robert P. and Marilyn W. Gatewood Fund for Children (2006)  
John Giba Youth Leadership Fund (1998)  
Richard and Helen Grant Fund (2009)  
Phyllis Hopman Arts and Culture Fund (2004)  
John S. and James L. Knight Foundation Fund (2007)  
Abby Gelles Knott Fund (2010)  
Judy Lake Memorial Fund (1988)  
MacArthur Foundation Housing Initiative (2008)  
John D. and Catherine T. MacArthur Fund (2004)  
Thomas Ladue McGinty Memorial Environmental Fund (1988)  
Mosaic Fund (2005)  
Harding Mott, Sr./US Sugar Corp. Training for Excellence Fund (1990)  
John T. Murray, M.D. Children's Health Fund (2008)  
Early Childhood Education Fund (2002)  
Perry-Belle and Phillip D. O'Connell Pioneer Fund (2001)  
Betty S. Price Fund (2000)

# funds at the community foundation for palm beach and martin counties

## *Field of Interest Funds continued*

Safety Net Fund (2009)

Lawrence A. Sanders Fund to Promote Literacy (2000)

David C. Scott Fund for ALS Research Fund (1986)

Bailey Stein Fund (2011)

The Hans and Mary Stratmann Fund (1997)

Susan R. & John W. Sullivan Fund for Martin County (1995)

Jack Taylor Fund for Abused and Neglected Children (2003)

The Walden Fund (1982)

Cliff Williams Youth Recreation Fund (1988)

## Designated Funds

*Designated Funds have been established by donors to support one or more of their favorite nonprofit organizations. Through these funds, many nonprofit institutions receive crucial annual support. The year the fund was established is listed in parentheses.*

Dwight and Lyona Allison Fund for Administrative Endowment (1986) – to support the Community Foundation for Palm Beach and Martin Counties

Laurence E. Barreca Fund (2006) – to support the Community Foundation for Palm Beach and Martin Counties

Thomas H. Blash and Martha Blash Research Fund (2003) – to support the Macular Degeneration Research Program at Bascom Palmer Eye Institute

Helen and Bob Bodington Fund (2010) – to support 4 named agencies

Mary Beth and Jack Callahan Fund (2011) – to support the Community Foundation for Palm Beach and Martin Counties

The Chairman's Fund (1983) – to support the Community Foundation for Palm Beach and Martin Counties

211 Palm Beach Treasure Coast Endowment Fund (1989) – to support 211

Cuban Scholarship Fund (2002) – to support Cardinal Newman High School's scholarship program

Early Learning Coalition of Palm Beach County Fund (2011) – to support Early Learning Coalition for Palm Beach County

Ruth Lewis Farkas Fund (1985) – to support National Foundation for Facial Reconstruction

Gionfriddo Health Education Fund (2009) – to support University of Texas and Wesleyan University

Barbara Groves Fund (2010) – to support the Community Foundation for Palm Beach and Martin Counties

Landon Fund (2009) – to support PACE Center for Girls Palm Beach County

Mariner Sands Chapel Fund (2004) – to support Mariner Sands Chapel

Stella Monchick-West Hospice Educational Fund (1999) – to support the educational programs at Hospice of Palm Beach County

Anna Marie Peterson Fund (2010) – to support the Arthur R. Marshall Jr. Foundation

Gwen Baker Rodgers Memorial Fund (1994) – to support The Charmettes

Marion Rossiter-Smith Fund (2011) – to support the music program at First Congregation Church in Lake Worth

David C. Scott Fund (1986) – to support eight named agencies

Mary B. Silk Memorial Fund (2001) – for Church of the Palms Congregational



# funds at the community foundation for palm beach and martin counties

## *Designated Funds continued*

Squire, Sanders & Dempsey L.L.P. Administrative Endowment Fund (1993) – to support the Community Foundation for Palm Beach and Martin Counties

Edward W. Snowden and Lee Hill Snowden Fund (2000) – to support the Community Foundation for Palm Beach and Martin Counties

VSA Florida - Palm Beach County Fund (1994) – to support VSA Florida Palm Beach County

Joseph Zimmerman Charitable Foundation Fund (2004) – to support the Community Foundation for Palm Beach and Martin Counties

## Agency Endowment Funds

*Nonprofit organizations establish agency funds as a way of providing a simple and efficient way to build an endowment. This helps create sustainability for their nonprofit organization. The year the fund was established is listed in parentheses.*

Easter Seals Palm Beach, Martin and St. Lucie Fund (2004)

Families First of Palm Beach County Foundation, Inc. (2013)

Florida Council on Economic Education Fund (2001)

Gale Academic Leadership Endowment Fund (2003)

## Donor Advised Funds

*The following is a list of all Donor Advised Funds established by individuals, families and companies choosing to be actively involved in their charitable giving. The year the fund was established is listed in parentheses.*

Helen Harting Abell Fund (2000)

The Acorn Fund (1997)

Americans For Recovery Fund (2010)

Albert and Marjorie Alfus Fund (1985)

Lyona and Dwight L. Allison, Jr. Fund (1986)

William E. Benjamin, II Fund (1981)

John H. Birdsall Family Fund (2004)

George W. Blabon, III Fund (2000)

George W. Blabon, III Endowed Fund (2000)

Mary R. and William C. Bowden Fund (1996)

Barnett-Merrill Family Fund (1997)

Briggs-Trimble Family Charitable Fund (1989)

Dr. William J. Bryant Family Fund (2000)

Cardinals-Marlins Fund (1998)

Chapin/Kiefer Family Fund (2000)

Coleman Family Fund (2008)

Bradley and Carol Collins Fund (1990)

Mark W. and Paula J. Cook Fund (2003)

James & Judy Daleen Fund (1996)

Elaine and Dave Darwin Fund (2002)

The de Peyster Family Fund (1995)

Margo and Ashton de Peyster Fund (2005)

John B. Dodge Fund (1986)

Don Donahue Fund (1994)

Rebecca Walter Dunn Fund (2009)

George and Wilma Elmore Fund (1986)

Flah Family Foundation for Childhood Trauma (2001)

Kathryn Fox Fund (2004)

Frisbie Family Fund (2012)

Funston Family Fund (2004)

Galadriel Peace Fund (2000)

Galadriel Peace Fund II (2000)

# funds at the community foundation for palm beach and martin counties

## *Donor Advised Funds continued*

Katherine and Richard Garlington Fund (2006)

Giuffrida Family Fund (1990)

Patrick J. and Jody H. Gleason Environmental Fund (2001)

Scott R. Goering Legacy Fund (2006)

Gurto DeLong Family Fund (2010)

Jane and Gene Guttman Fund (2004)

Hardrives of Delray, Inc. Fund (1985)

J. Ira and Nicki Harris Fund (1991)

Rita Dee Hassenfeld Fund (2003)

T.M. Henry Family Fund (1993)

The Heston Fund (1995)

Impact 100 Palm Beach County (2011)

The Jackson Family Foundation Fund (2003)

The Freddie Stebbins and James Julius Jefferson Family Fund (1999)

K2 KIDS (2013)

Kirkwood Fund (1994)

H. Kirsch Family Foundation Fund (2005)

Dixie Kirsch Family Foundation Fund (2005)

John S. and James L. Knight Foundation Fund (1995)

Sunny and Bonnie Knickerbocker Fund (2002)

William F. Koch, Jr. Fund (1988)

Laura E. and Wilbur J. Kupfrian Family Foundation Fund (2006)

Devon Kurlander Memorial Fund (2000)

Richard G. Lepeska Fund (2006)

Lottie French Lewis Fund (2010)

Lorenzini Family Fund (2012)

John D. and Catherine T. MacArthur Fund (2011)

William Morrison Matthews Fund (1991)

Michael Flagler Matthews Sports Education Fund (2006)

Jordan Camino Evert McCracken Memorial Fund (2008)

Michelle McGann Fund (2008)

Allan J. McIntosh Fund (1982)

Helen Powers Monahan Fund (2008)

Mordes Family Foundation Fund (2008)

Morris Family Fund (2011)

Morse Hill Foundation Palm Beach Donor Advised Fund (2011)

Jennifer Morton Fund (2003)

Norman and Sarah Murphy Fund (1987)

Olivia Foundation Fund (1995)

The Paradise Fund (2013)

Parmet Fund (2010)

The Nick Price Fund (2002)

Sadler/Hull Donor Advised (1996)

Schramm-Brown Fund (2012)

Jo Ann and Edward Sears Endowed Fund (2011)

Jo Ann and Edward Sears Fund (2011)

Sharma Family Fund (2002)

Silver Family Fund (2005)

Bickley F. and Russell G. Simpson Fund (1998)

Eliot and Ruth Snider Fund (1996)

Squire, Sanders & Dempsey L.L.P. (1990)

James Stern Family Foundation Fund (2009)

Charles T. and Patricia Carry Stewart Fund (1993)

Stiller Family Foundation Fund (2011)

Richard and Lesley Stone Family Fund (2011)

Toppel Family Fund (1998)

Sue Twyford Memorial Fund (2003)

# funds at the community foundation for palm beach and martin counties

## *Donor Advised Funds continued*

Wendy and Royall Victor III Fund for Environment and Landmark Preservation (2002)

Weinstein Family Fund (2001)

White Hat Charitable Fund (2013)

Robert Yates Charitable Fund (2007)

Youth Music Fund for Conserving Classical Music Education inspired by Alice Pyle Walker Maxey (2008)

R. J. Zuckerberg Palm Beach Fund (2012)

## Supporting Organization

Mary and Robert Pew Public Education Fund

*Their mission: to improve public education for economically disadvantaged children in Palm Beach and Martin Counties by developing, testing, and implementing new strategies for learning in classrooms, schools and neighborhoods and to support educational enrichment programs unavailable as part of the regular curriculum*

## Scholarship Funds

*Scholarships allow our donors to invest in the future by helping deserving students pursue higher education. Students benefit from the financial assistance as well as the academic recognition of being a scholarship recipient. The year the fund was established is listed in parentheses.*

John S. Atwater Memorial Scholarship Fund (2002)

Matthew James Audin Memorial Scholarship Fund (1999)

Laurence E. Barreca Scholarship Fund (2008)

Edward T. Bedford Foundation Scholarship Fund (2009)

Bennett/Darwin Family Scholarship Fund (2011)

Thomas William Bennett Memorial Scholarship Fund (1996)

Maura and William Benjamin Scholarship Fund (1984)

Lisa Bjork Memorial Scholarship (1989)

Walter & Adi Blum Scholarship Fund (1997)

Bank of America Minority Student Scholarship Fund (1986)

Gina Auditore Boner Memorial Scholarship Fund (1999)

Boone Horticultural Scholarship Fund (1999)

Harry and Bertha Bronstein Memorial Scholarship Fund (1988)

Allen C. Clark Memorial Scholarship Fund (1992)

Irene Gibson Clay Scholarship Fund (2008)

Frank and Marie Cleary Memorial Scholarship Fund (2005)

Bradley Collins Memorial Scholarship Fund (2004)

Colonial Bank Scholarship Fund (1981)

Christopher N. Coppola Scholarship Fund (2000)

Julian and Eunice S. Cohen Scholarship Fund (1988)

Ingebord Crede Memorial Scholarship Fund (2007)

Don Dahlberg Memorial Scholarship Fund (1983)

Terry Darby Memorial Scholarship Fund (1994)

James H. Davis Memorial Scholarship Fund (1996)

Delray Beach Playhouse Ernest G. Simon Scholarship Fund (2002)

Dr. Sidney Davidson Nursing Scholarship Fund (1997)

Ellen Beth Eddleman Memorial Scholarship Fund (1985)

Ernest Frank Scholarship Fund Created in Memory of Arlene Fulton Hammond (1997)

H. David Faust Memorial Scholarship Fund (1988)

# funds at the community foundation for palm beach and martin counties

## *Scholarship Funds continued*

First Bank and Trust of Indiantown Directors  
Memorial Scholarship Fund (2000)

Flicker/Freudenberg Scholarship Fund (2010)

Fran Gay Memorial Scholarship Fund (2001)

The Nettie Spiro Finkle Scholarship Fund (1998)

Community Scholarship Fund (1989)

The Gratitude Fund (1999)

The Gubelmann Family Foundation Scholarship  
Fund (2000)

Robert D. Handley Memorial Scholarship Fund  
(1997)

Andrew Hatfield Scholarship Fund (1997)

Kathy Heming Scholarship Fund (1997)

Heather and Patrick Henry Scholarship Fund (1993)

J. Peter Hoffman Memorial Scholarship Fund (1999)

Ray Howland Scholarship Fund (2000)

Helen Powers Monahan Scholarship Fund (2009)

Frank P. Husvar Memorial Scholarship Fund (2001)

Robert and Deborah Jacobson Scholarship Fund  
(2008)

R. Bruce Jones Memorial Scholarship Fund (1989)

Thomas F. Kearney Memorial Scholarship Fund  
(2007)

Danny Knichel Memorial Scholarship Fund (1989)

Robert P. Koch Memorial Scholarship Fund (2009)

Ryan Kollmer Memorial Scholarship Fund (1994)

George and Arlene F. Lepeska Scholarship  
Fund (2008)

Stefanie Liberti Memorial Scholarship Fund (1998)

Loblolly Scholarship Fund (1994)

Inez Peppers Lovett and Charlie Ellington  
Scholarship Fund (1994)

LSP Educational Scholarship Fund (2009)

Honorable Eva W. Mack, First Black Mayor of  
West Palm Beach Scholarship Fund (1989)

Paul L. MacAnaney Memorial Scholarship Fund  
(2000)

Mickey Mandelblatt Memorial Scholarship Fund  
(1996)

Esther Sheehy McShurley Scholarship Fund (2012)

Nicholas Megrath Scholarship Fund (2001)

Adele Wells Meyer Memorial Scholarship Fund  
(1994)

Sydelle F. and Arthur I. Meyer Scholarship Fund  
(2007)

Courtlandt and Gina Miller Scholarship Fund (2000)

Matthew "Bump" Mitchell/Sun-Sentinel Scholarship  
Fund (1989)

Jon M. Napierkowski Memorial Scholarship Fund  
(1991)

Mabry M. Noxon Scholarship Fund (2002)

Phillip D. O'Connell, Sr. Memorial Scholarship  
Fund (1988)

Denise Lynne Padgett Scholarship Fund (2001)

Palm Beach Chamber of Commerce Business  
Scholarship Fund (2009)

Palm Beach Kennel Club Scholarship Fund (1995)

Palm Beach Newspapers Scholarship Fund (1984)

Stephen Madry Peck, Jr. Memorial Scholarship Fund  
(1990)

PBC Society of Plastic & Reconstructive Surgeons,  
Inc. Scholarship Fund (1997)

The Reuter Scholarship Fund (1999)

Colonel Karl V. Price Lake Worth Community High  
School Air Force Jr. ROTC Scholarship Fund (1998)

Lawrence A. Sanders Scholarship Fund for  
Creative Writing (2000)



Kim Love Sartory Scholarship Fund (1997)

Theodore Satter Memorial Scholarship Fund (1984)

Leah G. Schad Memorial Scholarship Fund (2008)

Claire B. Schultz Memorial Scholarship Fund (1989)

Kyle Fredrik Schuemann Scholarship Fund (2004)

Peter Jay Sharp Foundation Scholarship Fund for Conservation/Environment Studies (2005)

Pundit Mulchand and Janki Devi Sharma Scholarship Fund (2004)

Tara Sheridan Scholarship Fund (2012)

Myrna Abelman Siegel Scholarship Fund (1995)

Dan Smith Dairy Scholarship Fund (1993)

Beverly Sommer Scholarship Fund (2000)

Lance Corporal Ryan J. Sorensen, USMC Liberty Scholarship Fund (2006)

Ann E. Stewart Memorial Scholarship Fund (1984)

Robert Glen Stern Scholarship Fund (2006)

St. Mary's Extended Education Fund (2000)

Sunburst Foundation Community Scholarship Fund (2008)

Ted Trimble Scholarship Fund for Vocational Training (1995)

Arthur C. Tilley Memorial Scholarship Fund (1995)

Trimble Scholarship for Martin County Fund (1990)

Roberta and Stephen R. Weiner Scholarship Fund (1994)

The Weitz Company Scholarship Fund (2002)

Friends of the Gerald A. Williams, Esq. Law Academy (2012)

Williamson Pioneer Fund (1997)

Ralph O. Wood Memorial Scholarship Fund (1991)

Dave Yanis Scholarship Fund (2000)

# 9

## new funds were established in fiscal year 2012

### AGENCY

Families First of Palm Beach County

### DONOR ADVISED

Frisbie Family Fund

K2 KIDS

The Paradise Fund

Schramm-Brown Fund

White Hat Charitable Fund

R. J. Zuckerberg Palm Beach Fund

### SCHOLARSHIP

Tara Sheridan Scholarship Fund

Friends of the Gerald A. Williams, Esq. Law Academy

# the endowment society

*The Endowment Society is made up of a group of dedicated individuals who know the value of a permanent community endowment and who have made or pledged a contribution of \$100,000 or more to the Community Foundation for Palm Beach and Martin Counties.*



**James and Claudine Kirkwood**

Mrs. Helen Harting Abell  
Estate of Mr. and Mrs. Henry Baldwin  
Estate of Laurence E. Barreca  
Mr. and Mrs. William E. Benjamin, II  
Estate of Thomas and Martha Blash  
Walter and Adi Blum Foundation, Inc.  
Mr. and Mrs. William C. Bowden  
Estate of Mr. and Mrs. Harry Bronstein  
Estate of John A. Callahan  
Mr. Julian Cohen\*  
Estate of Mr. James H. Davis  
Delray Beach Playhouse, Inc.  
Dr. Ruth Lewis Farkas\*  
Estate of Ernest Frank  
Friends of the Academy of Environmental  
Science and Technology, Inc.  
Estate of Richard S. Grant  
Mr. and Mrs. Kenneth L. Groves

Hardrives, Inc. of Delray Beach/Wilma A.\*  
and George T. Elmore

Estate of Jane S. Handley

Estate of Eugene Heston

Estate of J. Peter Hoffman

The Janirve Foundation

Estate of Mr. and Mrs. James Kirkwood, Jr.

Estate of Ilse Klassen

Sunny Knickerbocker Foundation

John S. and James L. Knight Foundation

Laura E. and Wilbur J. Kupfrian\*

Helen S. Lanier Foundation

Estate of Richard Lepeska

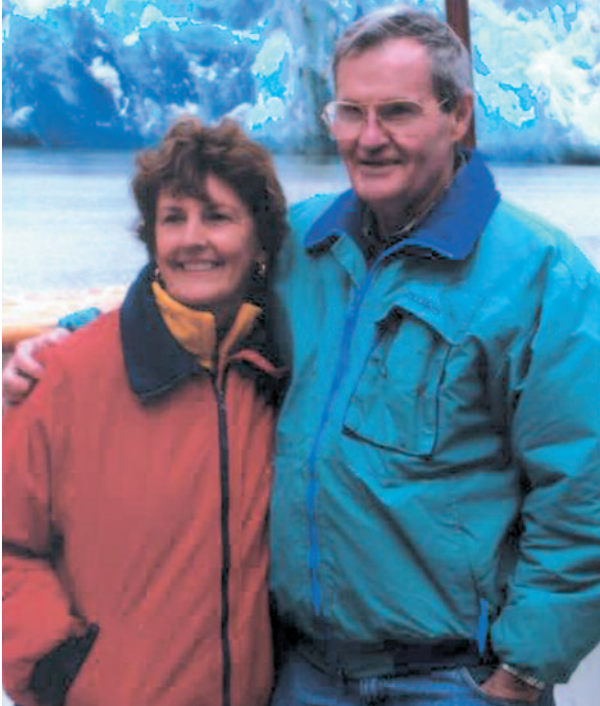
Estate of Lottie French Lewis

Marcelle Hull Littell Trust



**John D. & Catherine T. MacArthur**

# the endowment society



**Winsome & Michael McIntosh**

John D. and Catherine T. MacArthur Foundation  
Mickey Mandelblatt Memorial Scholarship Fund  
McIntosh Foundation/  
Mr. and Mrs. Michael A. McIntosh  
Nicholas Megrath Scholarship Fund  
Sydelle F. and Arthur I.\* Meyer  
Estate of Mabry M. Noxon  
Palm Beach Kennel Club  
Palm Beach Newspapers, Inc.  
Estate of Donald M. Paterson  
Estate of Anna Marie Peterson  
Ms. Betty Price  
Mr. and Mrs. Jorge A. Sanchez  
Lawrence A. Sanders Foundation, Inc.  
Estate of Claire B. Schultz  
Mr. and Mrs. Edward Sears  
Mr. Sanjiv Sharma  
Peter Jay Sharp Foundation  
Estate of James R. and Gladys R. Smith

Edward W. Snowdon and Lee Hill Snowdon Trust  
The Hans and Mary Stratmann Foundation  
Sugar Cane Growers Cooperative of Florida/  
in Memory of R. Bruce Jones  
Barbara B. and Edward C.\* Trimble  
United State Sugar Corporation/  
in Memory of Harding Mott, Sr.  
Estate of Alexander and Mildred Valuzis  
Estate of Herbert Weber  
Frederick P. Weissman Trust  
The Weitz Company  
Estate of Joseph Zimmerman  
Anonymous Donors

*\*Deceased*



**Barbara and Edward Trimble**

# annual fund contributors

## **\$50,000**

Tsunami Foundation -  
Anson & Debra Beard, Jr. and Family

## **\$25,000**

Florida Crystals Corporation  
Northern Trust

## **\$10,000 AND ABOVE**

Mr. George T. Elmore  
Mr. and Mrs. James F. Orr III  
Lawrence A. Sanders Foundation  
Mr. and Mrs. Douglas A. Stockham  
Roy J. Zuckerberg Family Foundation

## **\$5,000 AND ABOVE**

Anonymous  
Mr. and Mrs. John B. Dodge  
Dr. and Mrs. Paul Gingras  
Estate of Allen Ginsberg  
Gubelmann Family Foundation  
J. Ira and Nicki Harris Foundation  
Reuben B. Johnson and Mary E. Watkins  
Kessler Family Foundation  
Mr. and Mrs. William M. Matthews  
Mr. David G. Ober  
Mr. and Mrs. William G. Pannill  
Mr. and Mrs. John E. Pew  
Prime, Buchholz & Associates  
Mr. and Mrs. Michael Pucillo  
Thomas C. Quick  
Squire Sanders  
Eliot I. Snider, trustee of the Harold  
and Anna S. Ullian Charitable Foundation

Ms. Susan S. Stautberg  
Richard Stone and Lesley Blackner  
Mrs. Susan O. Taylor  
Templeton & Company  
Mr. and Mrs. Royall Victor III  
Winston Partners Group  
Mr. Lester Woerner

## **\$1,000 AND ABOVE**

Anonymous  
The ARC of Martin County  
Mrs. Diana Barrett and Mr. Robert Vila  
Mr. and Mrs. William E. Benjamin II  
Mr. and Mrs. Perry Borman  
Nancy Brinker Charitable Foundation  
Mr. and Mrs. Robert Chapin  
Mrs. Julian Cohen  
Mr. and Mrs. Denis P. Coleman Jr.  
Mrs. Bradley Collins  
Cummings & Lockwood  
Ms. Joanne Davis  
Mrs. Marjorie S. Fisher  
Mrs. Mary C. Funston  
Mrs. T. Richard Garlington Jr.  
Mrs. Katherine P. Goldsmith  
Mr. and Mrs. Murray H. Goodman  
Mr. W. Murray Hamner  
Mr. and Mrs. Daniel A. Hanley  
Mr. Jim Haymes & Ms. Pam Whitton  
Mr. Thornton M. Henry  
Mrs. Diana B. Holt  
Holyfield & Thomas



# annual fund contributors



**Anson and Debra Beard**

Mr. Richard Horowitz  
Jacobus Family Foundation  
Mr. and Mrs. Peter I.C. Knowles II  
Dr. and Mrs. Ronald Koch  
The Honorable Kathleen Kroll  
and Mr. Jonathan Low  
Mr. and Mrs. Philip Kuehl  
Mr. Andrew Kushner  
Mr. and Mrs. Robb Maass  
Mr. and Mrs. Benjamin S. Macfarland III  
Rani Newman Mathura Esq.  
Peter Matwiczuk, Esq.  
Mr. and Mrs. Kevin McGann  
McIntosh Foundation  
Mr. and Mrs. Sam Michaels  
Mr. and Mrs. Lawrence J. Miller  
Muffie Bancroft and Stephen Murray  
Mr. and Mrs. Lloyd Otterman

Palm Beach Investment Research Group  
Mr. and Mrs. Robert Reveley  
The Honorable Edward Rodgers  
The Rodman Foundation  
E. Burke Ross, Jr. Charitable Foundation  
Mr. and Mrs. John H. Schuler  
Mrs. Charles T. Stewart  
Mr. and Mrs. John H. Surovek  
Mrs. Edward C. Trimble  
Urban League of Palm Beach County  
Mr. and Mrs. Paul J. Van der Griff  
Mr. and Mrs. George T. Williamson

## **\$500 AND ABOVE**

Anonymous  
Appomattox Advisory  
Mr. Christopher R. Castroviejo  
C.R.O.S. Ministries  
Ms. Diane de la Begassiere  
Mr. Daniel E. Drennen II  
Ms. Kathleen B. Emmett CFRE  
FLAG Capital Management  
Mr. Joseph Floyd  
Habitat for Humanity, Palm Beach County  
The HSM Charitable Foundation  
Dr. Lorraine Mari  
Ms. Carey O'Donnell  
Place of Hope  
Mr. Horton R. Prudden Jr  
Mr. and Mrs. Stanley M. Rumbough Jr.  
Mrs. Virginia Smith  
Mr. and Mrs. Bailey B. Sory

# annual fund contributors

Mr. James P. Taggart  
Dr. and Mrs. Donald E. Warren  
Ms. Beverly White Yaeger

## UP TO \$499

Anonymous  
Acadian Asset Management  
Mr. and Mrs. H. Loy Anderson Jr.  
Dr. Jennifer O'Flannery Anderson  
Mr. and Mrs. Alfred R. Bell Jr.  
Mr. Nathan Berry and Ms. Katherine Daigh  
Mr. and Mrs. John Bollero Jr.  
Ms. Danielle Blangy Cameron  
Ms. Laurie Carney  
Ms. Patricia Carter  
Mrs. Lucy Cesa  
Mr. and Mrs. Nick Cioffi  
Mr. and Mrs. C. Payson Coleman  
Ms. Mildred Hayes Cross  
Ms. Kathryn Fox  
Gunster  
Gutter Chaves Josepher Rubin  
Forman Fleisher Miller  
Robert G. Haile Esq.  
Mr. and Mrs. Tim Hanlon  
Ms. Kristin Holmes and Mr. Chris Cassidy  
Mr. Daryl K. Houston  
The Institute for Women and Wealth  
Mrs. Arthur J. Kobacker  
Mr. Jeffrey A. Krebs  
Ms. Suzanne W. Lanigan  
Ms. Mary S. Lynch  
Mr. and Mrs. James Marcus

Ms. Sandra Mari  
Mr. and Mrs. Alexander W. Matthews  
Mr. and Mrs. S. Bruce McDonald  
Ms. Bonnie Mitchell  
Ms. Lisa N. Mulhall  
Mrs. Leslie Lilly Murphy and Mr. Tim Murphy  
Jay Mussman, Esq.  
Mr. and Mrs. Michael Peacock  
Mr. Ted Peroulakis CSNA  
Mr. & Mrs. Milton Prigoff  
Ms. Sandra Reid  
Ms. Gloria Ortega Rex  
Mrs. Kent Rhodes  
Ms. Allison Ridder  
Ms. Tandy Robinson  
Mr. David Rutherford  
Mrs. David C. Scott  
Mr. & Mrs. Robert G. Sharra  
Ms. Tina M. Snider  
Mr. Ben Starling III  
Ms. Jamie Taylor  
Mr. and Mrs. Wallace R. Turner  
Ms. Jillian Vukusich  
Ms. Frances Cloud Webster  
Ms. Barbara Weldon  
Mr. and Mrs. Stan West  
Ms. Dale J. Workman  
Mr. and Mrs. Winston Wren

# 2012/2013 contributors

*The Community Foundation gratefully acknowledges support received from the following donors  
(July 1, 2012 to June 30, 2013):*

## **\$3,000,000+**

Estate of Eugene Heston

## **\$1,000,000 AND ABOVE**

Anonymous

Mr. Sanjiv Sharma

## **\$500,000 AND ABOVE**

John S. and James L. Knight  
Foundation



*Cindy Krebsbach, Lisa Mulhall and Tandy Robinson, Co-Founders of Impact 100  
Palm Beach County.*

## **\$100,000 AND ABOVE**

Edward T. Bedford Foundation  
Mr. and Mrs. William M. Matthews  
R A Morris Family Foundation  
Edward and Jo Ann Sears  
Sunburst Foundation  
Mr. Roy J. Zuckerberg

Florida Crystals  
Mrs. T. Richard Garlington Jr.  
Jupiter Stadium  
K2 Realty  
Northern Trust  
The Paradise Fund  
Burt & Pucillo  
Mr. Harold Stern  
Mr. Robert L. Yates

Mr. and Mrs. James F. Orr III/  
Orr Family Foundation  
Michael & Margaret Picotte  
Foundation  
Mr. Michel Piranesi  
Mr. and Mrs. Douglas A. Stockham  
Mrs. Edward C. Trimble  
Mrs. Carolyn L. Williams

## **\$50,000 AND ABOVE**

Tsunami Foundation, Anson  
& Debera Beard, Jr. and Family  
Citi Foundation  
Families First of Palm Beach County  
Mr. and Mrs. David W. Frisbie  
Estate of Esther C. McShurley  
Quantum Foundation, Inc.  
Lawrence A. Sanders Foundation  
Carl J. Schramm and Ellyn L. Brown

## **\$10,000 AND ABOVE**

Walter & Adi Blum Foundation  
Albert C. Bostwick Foundation  
Mr. and Mrs. Dave E. Darwin  
Ms. Mary D. Dorsey  
Mr. George T. Elmore  
Fisher-Cummings Family Fund  
Gubelmann Family Foundation  
Landon Family Foundation  
Ambrose Monell Foundation

## **\$5,000 AND ABOVE**

Anonymous  
Ms. Veronica Atkins  
Mr. and Mrs. John B. Dodge  
Dr. and Mrs. Paul Gingras  
Estate of Allen Ginsberg  
J. Ira and Nicki Harris Foundation  
Reuben Johnson and  
Mary Watkins  
Kessler Family Foundation  
Ms. Abby Gelles Knott

## **\$25,000 AND ABOVE**

Anonymous  
Mr. and Mrs. Denis P. Coleman Jr.

# 2012/2013 contributors

Lake Worth Community  
High School  
Dr. and Mrs. Chester Maxson  
Morse Hill Foundation  
Mr. David G. Ober  
Mr. and Mrs. William A. Pannill  
Mr. and Mrs. John E. Pew  
Prime, Buchholz & Associates  
Mr. and Mrs. Michael Pucillo  
Mr. Thomas C. Quick  
Ms. Tandy Robinson  
The Honorable Edward Rodgers  
Mr. and Mrs. Eliot I. Snider  
Squire Sanders  
Ms. Susan S. Stautberg  
Mr. Jack C. Taylor  
Mrs. Susan O. Taylor  
Templeton & Company  
Mr. Royall Victor III  
The Weitz Company  
and its employees  
Winston Partners Group  
Mr. Lester Woerner

## **\$1,000 AND ABOVE**

Anonymous  
Ms. Kathryn C. Adkins  
Dr. Alison Adler  
Ms. Nicole Allen  
Ms. Susan B. Ambrecht  
The American College  
Ms. Deborah L. Anderson  
Ms. Katariina M. Anstey  
The ARC of Martin County  
Mrs. Kathleen A. Assaf

Mr. and Mrs. Joseph R. Atterbury  
Stephenson Pope Babcock  
Foundation  
Ms. Barbara G. Backer  
Ms. Candice W. Bagby  
Ms. Helen C. Ballerano  
Muffie Bancroft and  
Stephen Murray  
Ms. Patricia A. Bartlett  
Mrs. Marta T. Batmasian  
Ms. Kim Beaumont  
Patrick Belanger and  
Sophie Lavoie  
Mr. and Mrs. William E. Benjamin II  
Ms. Sylvie Bergeron  
BFW Advertising  
Ms. Karin Bice  
Ms. Carla Black  
Boca Raton Observer  
Ms. Kathleen M. Bogen  
Ms. Nadia Bohlman  
Ms. Ina B. Bond  
Hilary Boone Foundation  
Mr. and Mrs. Perry Borman  
Ms. Gay Bridges  
Mr. and Mrs. Randy R. Briggs  
Nancy Brinker Charitable  
Foundation  
Ms. Susan P. Brockway  
Broken Sound Womens Club  
Ms. Cynthia P. Brown  
Ms. Julia Buser  
Ms. Joanne M. Butcher  
Ms. Rebecca Byrne  
Ms. Debra A. Cancilla  
Ms. Mickey Capelli

Ms. Kathryn Carbone  
Ms. Marina L. Chaney  
Mr. and Mrs. Robert Chapin  
Ms. Theresa F. Chick  
Ms. Paula E. Cochran  
Mrs. Julian Cohen  
Ms. Jill Craig Coller  
Mrs. Bradley Collins  
Ms. Tamra Constantine  
Ms. Amy Crompton  
Cummings & Lockwood  
Ms. Carolyn S. Cunningham  
Ms. Sharon DaBrusco  
Ms. Christine Davies  
Ms. Susan Davis  
Ms. Joanne Davis  
Ms. Caroline Delafield  
Mr. and Mrs. Michael DeLong  
Mr. Evan Deoul  
Ms. Elizabeth R. Destefano  
Ms. Betty P. Devitt  
Ms. Robin Deyo  
Ms. Margaret W. Dickenson  
Ms. Susan C. Diener  
Ms. Janice DiLorenzo  
Ms. Deborah D. Dowd  
Ms. Michelle A. Duffy  
Ms. Elizabeth Pankey-Warren  
Ms. Martha T. Ely  
Ms. Mary Jane Evans  
Ms. Roseanne Faig  
Dr. Ann Faraone  
Ms. Alexandra K. Ferrara  
Ms. Sandra C. Finn  
Marjorie S. Fisher Fund



# 2012/2013 contributors



**Stern Family**

Ms. Margie K. Fitzsimons

Ms. Sarah E. Flynn

Friends of the Academy  
of Environmental Science  
and Technology

Ms. Candace L. Friis

Ms. Sheree Funsch

Mrs. Mary C. Funston

Ms. Liza Zwig Gerstein

Dr. and Ms. Michael Gioia

Ms. Marina Glavota

Ms. Louise W. Glover

Herbert and Rosalie Goldberg  
Family

Mrs. Katherine P. Goldsmith

Mr. and Mrs. Murray H. Goodman

Mrs. Donna Marie Goray

Ms. Melissa Gray

Ms. Robin R. Graziano

Ms. Peg Greenspon

Ms. Joanne R. Grubman

Gunster

Mr. W. Murray Hamner

Mr. and Mrs. Daniel A. Hanley

Ms. Mary Cheryl Hargrove

Ms. Cheryl M. Harman

Ms. Susan E. Harris

Harris Private Bank

Merrill G. & Erita E. Hastings  
Foundation

Ms. Karin Hathaway

Ms. Joanne F. Hayes

Ms. Chris C. Heathcott

Ms. Anne M. Henderson

Mr. Thornton M. Henry

Ms. Arlene Herson

Ms. Marsha C. Hill

Ms. Shelly Himmelrich

Holyfield & Thomas

Mr. Richard Horowitz

Ms. Lynn Hover

Ms. Stephanie Howard- Dodge

Ms. Monique L. Huntington-Keitz

The Institute for Women  
and Wealth

Intermix

J& L Foundation

Jacobus Family Foundation

Ms. Beth A. Johnston

Ms. Rema J. Kaleel

Ms. Denise Kalland

Ms. Amy S. Kazma

Ms. Debora A. Kellogg

Ms. Mary G. Kelly

Ms. Elizabeth Hubbard Kleiner

Ms. Penny M. Klein

Ms. Andrea Kline

Ms. Jane O. Kluczkowski

Ms. Patricia Knobel

Mr. and Mrs. Peter I.C. Knowles II

Dr. and Mrs. Ronald Koch

Ms. Bonnie E. Koenig

Ms. Penny H. Kosinski

Ms. Suzanne H. Kraft

Dr. and Ms. Michael J. Krebsbach

The Honorable Kathleen J. Kroll  
and Mr. Jonathan Low

Mr. and Mrs. Philip Kuehl

Mr. Andrew Kushner

Ms. Cristina Lampuri

Ms. Janet T. Lano

Ms. Lynn Lawless

The Lazarus Charitable Trust

Ms. Karen J. Leikert

Ms. Janice Lempereur

Ms. Jeanette M. Lewis

Ms. Deborah Lindstrom

Sharon Lindsey Esq.

# 2012/2013 contributors

Ms. Janet Little  
Ms. Elizabeth H. Locke  
Ms. Deana M. Love  
Ms. Maura Abad Lowe  
Mr. and Mrs. Robb Maass  
Ms. Dorothy C. MacDiarmid  
Ms. Serafina R. MacDonald  
Ms. Jane MacDonald  
Mr. and Mrs. Benjamin S.  
Macfarland III  
Ms. Patricia Maczko  
Ms. Patricia Maguire  
Ms. Jayne S. Malfitano  
Ms. Michelle Marshall  
Mary Anna Foundation  
Charitable Trust  
Rani Newman Mathura Esq.  
Betsy K. Matthews and  
George G. Matthews  
Matwiczuk & Brown  
Ms. Linda C. McElwee  
Mr. and Mrs. Kevin McGann  
Ms. Sharon McGuire  
McIntosh Foundation  
Ms. Loretta McQueen  
Ms. Kellie Mejia  
Ms. Shirley Metka  
Ms. Katherine G. Metzger  
Ms. Kerry C. Metz  
Mr. and Mrs. Sam Michaels  
Ms. Janice V. Middlebrook  
Ms. Jennifer Mignano  
Mr. and Mrs. Lawrence J. Miller  
Ms. Patricia M. Moloney  
Ms. Alison C. Moore  
Ms. Lisa M. Morgan



**George T. Elmore**

Ms. Nicole J. Mugavero  
Ms. Robin C. Muir  
Mr. and Mrs. John T. Mulhall III  
Ms. Francine D. Mulliez  
Dr. and Mrs. John T. Murray  
Mrs. Nancy M. Nealon  
Ms. Diane L. Nestor  
Ms. Yueh-Mei Kim Nutter  
Ms. Sheila O'Boyle  
Ms. Tina R. O'Connor  
Office Depot Foundation  
Ms. Jane Orthwein  
Mrs. Mary Thom Osborne  
Mr. and Mrs. Lloyd Otterman  
Ms. Frances V. Owen  
Palm Beach Investment  
Research Group  
Ms. Anna Parrott  
Dr. Dorothy Adams Peck  
Periwinkle Online  
Ms. Cheryl A. Peterson  
Ms. Cynthia D. Prestwood  
Ms. Carole Putman  
John J. Raymond Jr. Esq.

The Reiling Family Foundation  
Mr. and Mrs. Robert Reveley  
Mrs. Kent Rhodes  
Ms. Lori Richman  
Ms. Tandy Robinson  
The Rodman Foundation  
Ms. Deanna C. Rosemurgy  
E. Burke Ross, Jr.  
Charitable Foundation  
Ms. Charlotte Rubin  
Ms. Michelle Rubin  
Ms. Margaret Ruzika  
Saks  
Ms. MaryLou Saks  
Mr. Peter J. Salvatore  
Ms. Phyllis Ann Santry  
Ms. Jan Savarick  
Ms. Joanne Scheller  
Ms. Deborah A. Schmidt  
Mr. and Mrs. John H. Schuler  
Ms. Holly D. Schuttler  
Ms. Jove Scott  
Ms. Susan C. Simmons  
Ms. Jacalyn Slatkow  
Ms. Therese M. Snyder  
Ms. Patty Soltis  
Ms. Kirsten Stanley  
Ms. Julie Peyton Stein  
Mrs. Charles T. Stewart  
Ms. Dalia P. Stiller  
Ms. Laura J. Stoltz  
Sugar Cane Growers  
Cooperative of Florida  
Ms. Cynthia E. Surman  
Mr. and Mrs. John H. Surovek

Ms. Karen Sweetapple  
 Ms. Marilyn L. Swillinger  
 Ms. Virginia M. Syer  
 Ms. Lisa Tiernan  
 Ms. Nancy Tomlinson  
 Ms. Leslie A. Tomenson  
 Ms. Nancy Tomlinson  
 Ms. Catherine C. Toomey  
 Urban League of  
 Palm Beach County  
 Mr. and Mrs. Paul J. Van der Grift  
 Ms. Luane L. Venables  
 Mrs. Diana Barrett and  
 Mr. Robert Vila  
 Ms. Kathy L. Walsh  
 Ms. Rebecca L. Walsh  
 Mr. Alexander Warner  
 Ms. Sharon L. Warren  
 Ms. Sharon M. Weekes  
 Sue and Elliott Weinstein  
 Ms. Patricia H. Whitehouse  
 Ms. Barbara Whittaker  
 Whitehall Foundation  
 Mr. Jim Haymes and  
 Ms. Pam Whitton  
 Ms. Susan L. Wicker  
 Ms. Elizabeth F. Williams  
 Mr. and Mrs. George T. Williamson  
 Ms. Elizabeth F. Williams  
 Ms. Patricia M. Wilson  
 Ms. Mary Windle  
 Ms. Susan R. Yeager  
 Joel H. Yudenfreund Esq.  
 The Jordan Zimmerman  
 Family Foundation

#### **\$500 AND ABOVE**

Anonymous  
 Appomattox Advisory  
 Mr. Christopher R. Castroviejo  
 Mr. Nicholas W. Coppola  
 C.R.O.S. Ministries  
 Mr. Daniel N. Davis  
 Ms. Diane de la Begassiere  
 Mr. Daniel E. Drennen II  
 Edgewater Custom Homes  
 Ms. Kathleen B. Emmett CFRE  
 FLAG Capital Management  
 Mr. Joseph Floyd  
 Mr. and Mrs. Joel S. Golden  
 Habitat for Humanity,  
 Palm Beach County  
 The HSM Charitable Foundation  
 Juno Beach Civic Association  
 Mrs. Charlotte Mandelblatt  
 Dr. Lorraine Mari  
 Mr. and Mrs. Phillip D. O'Connell Jr.  
 Ms. Carey O'Donnell  
 Place of Hope  
 Mr. Horton R. Prudden Jr  
 Mr. and Mrs. Stanley M.  
 Rumbough Jr.  
 Steven M. Scott M.D.  
 Mrs. Virginia Smith  
 Mrs. Bailey B. Sory  
 Mr. James P. Taggart  
 Ms. Carol Tendler  
 Dr. and Mrs. Donald E. Warren  
 Woodfield Women's Club  
 Ms. Beverly White Yaeger

## gifts of tribute

*The gifts listed below  
were made in honor of  
or in memory of:*

#### **IN HONOR OF:**

Ms. Jean B. Gutkin  
 Mr. Bradley A. Hurlburt  
 Mr. Trevor M. Jefferson  
 Mr. Jeffrey A. Krebs  
 Ms. Cynthia A. Krebsbach  
 Mrs. Charlotte Mandelblatt  
 Mr. and Mrs. Eric W. Mandelblatt  
 Mr. and Mrs. William M. Matthews  
 Ms. Lisa N. Mulhall  
 Dr. John T. Murray  
 The Honorable Edward Rodgers  
 Mr. Thomas C. Quick  
 Ms. Tandy Robinson

#### **IN MEMORY OF:**

Mr. Stig Bjork  
 Mr. Nicholas W. Coppola  
 Mr. Scott R. Goering  
 Mr. James F. Hargrove  
 Mr. Robert P. Koch  
 Mr. Ryan Kollmer  
 Mr. Mickey Mandelblatt  
 Mr. Michael Flagler Matthews  
 Ms. Denise Padgett  
 Mr. Robert C. Pew II  
 Mr. Donald M. Ravel  
 Mr. Kyle F. Schuemann  
 Mr. Jeffrey L. Smith  
 Ms. Nancy Widell

# 2012/2013 grant recipients

## Arts & Culture

**ARTISTS FOR A CAUSE, STUART**  
**Dance for Food Program**  
**\$1,800**



A series of five contemporary dance performances, where admission cost is nonperishable food donations. The program creates professional and educational opportunities for hundreds of dancers and raises important food donations for the community.

*Supported by the Susan R. & John W. Sullivan Fund for Martin County.*

## Community & Economic Development

**NORTHWEST COMMUNITY CONSORTIUM,**  
**WEST PALM BEACH**  
**Community Round-Up and Collaboration**  
**\$50,000**

Community Round-Up is a program that unites residents, churches, businesses and nonprofits in the northwest community. It provides support and coordination of meetings, marketing materials and event coordination and promotion of the neighborhood's signature events: Healthy Eating & Community Health Walk; Tour of Historic Neighborhood Sites; Community Soul Festival; Discover Northwest- The Heart and Soul of Business Development; Community BBQ; Gospel Soul Festival; and the Taste of the Northwest Holiday.

*Supported by the John S. and James L. Knight Foundation Fund.*



## Education

**THE SCRIPPS RESEARCH**  
**INSTITUTE - SCRIPPS**  
**FLORIDA, JUPITER**  
**General support of**  
**Alzheimer's research**  
**\$50,000**

For general support of scientific research being conducted by Dr. Ronald

L. Davis that includes the brain and how memories are formed, stabilized, and retrieved. He is focused on human diseases that affect learning and memory, including Alzheimer's, schizophrenia, bipolar disorder, autism, and ADHD.

*Supported by the Betty S. Price Fund.*



## Environmental

**FLORIDA ATLANTIC UNIVERSITY**  
**FOUNDATION, BOCA RATON**  
**Green Schools Recognition Program (GSRP)**  
**\$24,994**

Now in its 6th year, FAU/ Pine Jog's GSRP recognizes schools for taking a holistic approach to going "green" by incorporating school ground enhancement, resource conservation, curriculum connections, and community involvement with a school-wide commitment

to and focus on sustainability and environmental stewardship. There are 66 recognized schools from Palm Beach and Martin Counties and this grant will help this model program continue to grow by funding workshop series, annual conference and marketing and clerical support.

*Supported by the Environmental Fund.*





# 2012/2013 grant recipients

## Health and Human Services

### **PALM BEACH COUNTY FOOD BANK, LANTANA** **Community Foundation match challenge** **\$64,500**

The Food Bank distributes food to the more than 100 agencies in Palm Beach County that take on the responsibility of feeding the hungry. These agencies range from operating small food pantries (that distribute canned goods and perishable food) to larger soup kitchens that prepare at least one hot meal per day.



*Supported by the Eliot and Ruth Snider Fund; the Morse Hill Foundation Palm Beach Donor Advised*

*Fund; the Richard and Lesley Stone Family Fund; Deborah Pucillo; Roy J. Zuckerberg; the Fisher-Cummings Family Fund; and Mr. and Mrs. John E. Pew.*



## Religious

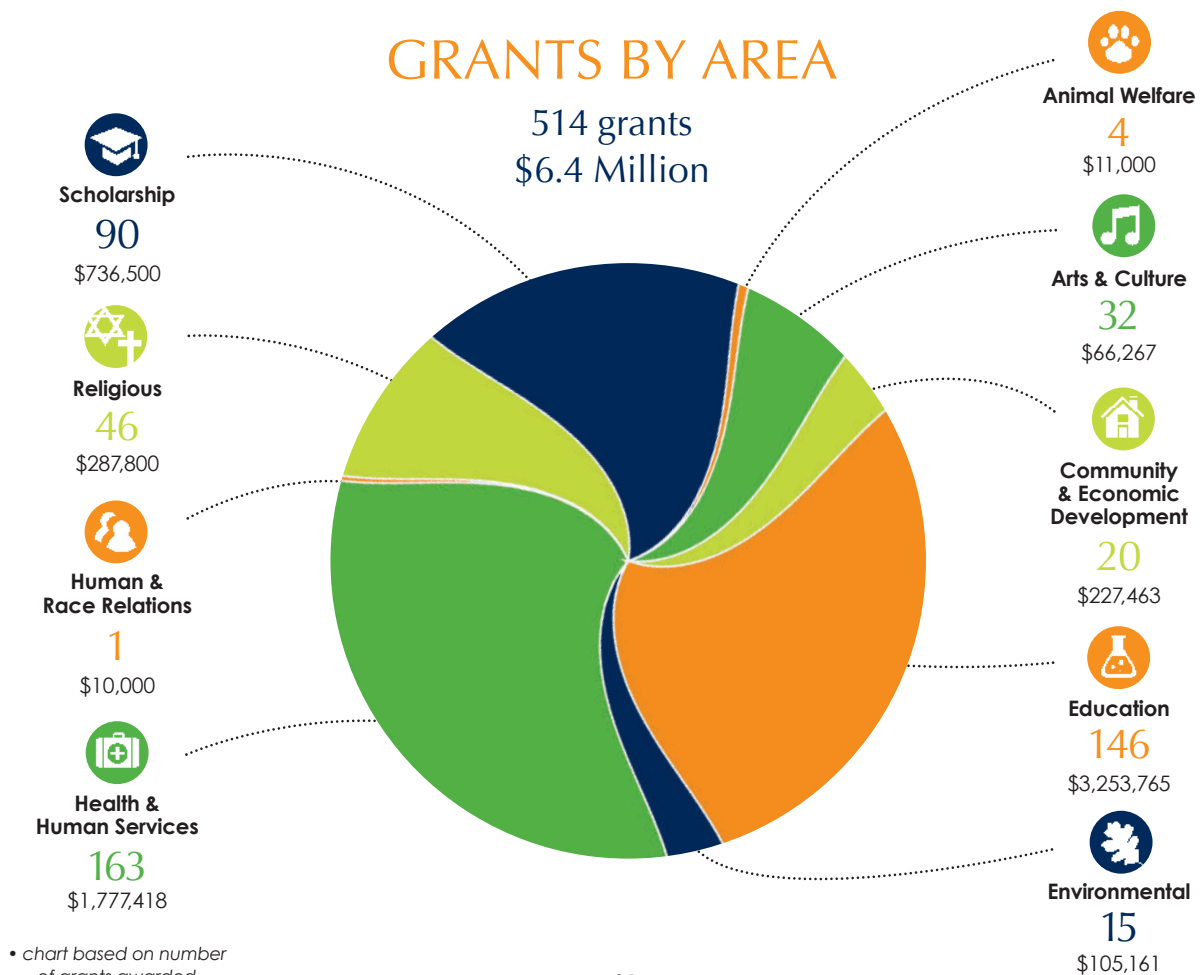
### **TEMPLE ISRAEL, WEST PALM BEACH** **Annual Support** **\$2,550**

Support of the Congregation's mission to serve the religious, social and community needs of its members.

*Supported by the Silver Family Fund.*

**For a full list of grant recipients, please visit**  
**[www.yourcommunityfoundation.org](http://www.yourcommunityfoundation.org)**

## GRANTS BY AREA



# professional advisors council

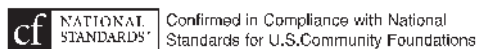
James A. Ballerano, Jr., Esq. | *Chapin, Ballerano & Cheslack*  
M. Adam Bankier Esq. | *The Bankier Law Firm*  
Ms. Melinda Barham | *Marsh Private Client Services*  
Jeffrey A. Baskies Esq. | *Katz Baskies*  
James B. Bertles Esq. | *Tiedemann Wealth Management*  
Scott A. Bowman Esq. | *Proskauer*  
Mr. Bill Burnett CFP, CIMA | *Northern Trust*  
Mary Sue Donohue Esq. | *Law offices of Mary Sue Donohue*  
Rosanne M. Duane Esq. | *Rosanne M. Duane*  
Ms. Elizabeth A. Dunn CPA | *Elizabeth A. Dunn, CPA, AEP*  
Jo Ann Engelhardt, Esq. | *Bessemer Trust*  
Alyssa R. Feder Esq. | *J. P. Morgan Private Bank*  
Ronald L. Fick Esq. | *Dunwoody White & Landon*  
Fernando M. Giachino Esq. | *Thurlow, Thurlow & Giachino*  
William T. Hennessey III, Esq. | *Gunster*  
Thornton M. Henry, Esq. | *Jones, Foster, Johnston & Stubbs*  
Ms. Marjorie A. Horwin CPA | *Morrison, Brown, Argiz & Farra*  
Mr. Ryan Howard CFA | *Goldman Sachs*  
Erik E. Joh Esq. | *Hinman, Howard & Kattell*  
Ms. Elsa G. Johnson CPA | *Elsa G. Johnson*  
Thomas O. Katz Esq. | *Katz Baskies*  
Mr. David A. Katzman CPA | *CBIZ MHM*  
Mr. Donald L. Londeree | *Sabadell United Bank*  
Rani Newman Mathura Esq. | *Cummings & Lockwood*  
Peter Matwiczuk Esq. | *Matwiczuk & Brown*  
Lawrence J. Miller Esq. | *Gutter Chaves Josepher Rubin Forman Fleisher Miller*  
R. Brady Osborne Jr. Esq. | *Osborne & Osborne*  
Victoria W. Peaper Esq. | *Wilmington Trust FSB, Florida*  
David Pratt Esq. | *Proskauer*  
John C. Rau Esq. | *Chilton Trust Management*  
Ms. Tandy L. Robinson | *Goldman, Sachs & Company*  
Robert L. Rubin Esq. | *Robert L. Rubin Attorney*  
Lisa A. Schneider Esq. | *Gunster*  
James Sopko Esq. | *Kramer, Sopko & Levenstein*  
Donald R. Tescher Esq. | *Tescher & Spallina*  
Joel H. Yudenfreund Esq. | *The Private Client Reserve of U.S. Bank*





**Your Philanthropy  
Our Community  
Better Together**

700 South Dixie Highway, Suite 200  
West Palm Beach, FL 33401  
TEL 561.659.6800 • FAX 561.832.6542  
[www.yourcommunityfoundation.org](http://www.yourcommunityfoundation.org)



*Content development by Tina Snider.*