



ANNUAL REPORT

2022-2023



GIVING FOR GOOD

MESSAGE FROM LEADERSHIP

To Our Community Foundation Family,

Thanks to your generosity and partnership, we are pleased to report another strong year of Giving for Good at the Community Foundation for Palm Beach and Martin Counties. The following pages spotlight just a few of the people and programs who have inspired us by making our community safer, healthier, and happier in 2023.

We are especially proud of our collective community impact: This year, we distributed an unprecedented **\$4.3 million in competitive grants** to local nonprofit partners working on issues like hunger, housing, mental health and more; sent over 100 local high school students to college through **\$1.2 million in scholarships**; processed nearly **\$12 million in donor-directed grants** to the causes closest to your heart; and grew your investments to **\$245 million in assets under management**.

As our Board of Directors welcomes new members and leadership, we remain as committed as ever to advancing our Leading for Good Strategic Plan's vision to help our community thrive. Your support is integral to our success, and we thank you for partnering with the Community Foundation as we work to make our community a better place to live — for now, and forever.

With gratitude,



Julie

Julie Fisher Cummings
Chair



Jeffrey

Jeffrey A. Stoops
Incoming Chair FY24



Danita

Danita R. DeHaney
President and CEO



Danita R. DeHaney,
Shawn M. Donnelley, and
Julie Fisher Cummings



Anne Harrison and
Mary Pat Alcus



Pamela Rauch, Ava Parker, Denise Rivas,
Sherry Barrat, and Juliet Roulhac

SEASON EVENTS

Nearly 1,000 donors, professional advisors, nonprofit partners, community leaders and friends joined us to learn more about our community's most pressing needs in 2023. Here are a few snapshots from the engagement events that the Community Foundation convened.



Andrew Wieseneck, Gary Adkin, Kirstin Turner, Paul Wieseneck,
and Joe Robinson



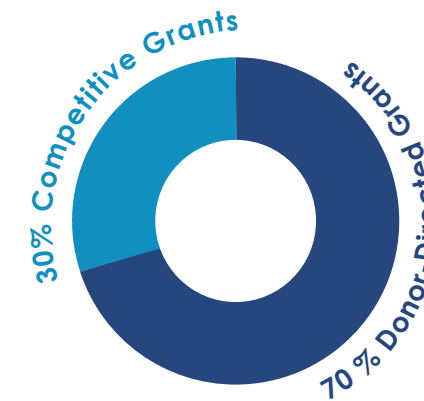
Mark-Anthony
Brown and
Althea Ceasor



Susan S. Stautberg, Theo Schwabacher, and
Ambassador Frances D. Cook

Photos by Tracey Benson

2022-2023 BY THE NUMBERS



\$16 MILLION distributed
through **1,079** donor-directed
and competitive grants to **558**
unique nonprofit organizations



116 scholarships awarded
totaling **\$1.2 MILLION**

\$28.3 MILLION
total contributions



\$245 MILLION
total assets

DONOR-DIRECTED FUND GRANTMAKING AT-A-GLANCE

Top 3 areas
supported by
Donor-Advised
Funds

- 1 Education
- 2 Human Services
- 3 Arts, Culture, and Humanities

FY 22-23 / BOARD of DIRECTORS OFFICERS



Julie Fisher Cummings, MSSW
Chair
Co-founder, Lovelight
Foundation



Sherry S. Barra**
Immediate Past Chair
Lead Non-Executive Director,
NextEra Energy



Jeffrey A. Stoops
Vice-Chair
CEO, SBA Communications
Corporation



Dennis "Denny" S. Hudson III
Treasurer
Director, Seacoast Bank
Corporation



**The Honorable
Sheree Davis Cunningham (Ret.)**
Secretary
Retired Judge, Florida's
15th Judicial Circuit



Danita R. DeHaney
President & CEO

BOARD OF DIRECTORS



Anquan Boldin**
Founder,
The Q81 Foundation



Michael J. Bracci
President, East Florida
Region and
Mid-Atlantic Region,
EVP of Northern Trust



**Ambassador
Nancy G. Brinker**
Founder, Susan G.
Komen for the Cure



Susan P. Brockway
Community Leader



Timothy D. Burke
Former Publisher/CEO
Palm Beach Post and
Palm Beach Daily News



James "Chip" DiPaula, Jr.
Co-Founder,
Flywheel Digital



William E. Donnell
President and CEO,
NCCI



Earnie Ellison, Jr.
Managing Partner,
Ellison Consulting
Group



Dennis P. Gallon, Ph.D.
President Emeritus,
Palm Beach State College



Phyllis M. Gillespie, Esq.*
Owner,
Gillespie Law Firm



Tammy Jackson-Moore
Owner,
The Jackson-Moore
Group



Joanne Julien, MD
Doctor of Medicine



Elizabeth "Libby" Marshall**
Landscape Architect



Gabrielle Raymond McGee*
Chief Operating Officer, Tory
Burch Foundation



David Mérot*
Director, EDA University
Center for Community &
Economic Development,
University of Michigan



Lisa M. Morgan, Esq.**
President, Mumma
Realty Associates



Elizabeth R. Neuhoff
Former President
& CEO, Neuhoff
Communications, Inc.



Pamela M. Rauch
Vice President, External Affairs
and Economic Development
Florida Power & Light



Alex Rubio**
Vice President, Integrated
Supply Chain, NextEra Energy



Susan Schiffer Stautberg
Governance Advisor,
Atlantic Street Capital



Laurie S. Silvers, Esq.
Co-CEO,
Hollywood.com LLC



Meredith Trim
President & Director,
Ventus Charitable
Foundation

NOURISHING NEED *in the Glades*

LIGHTHOUSE CAFÉ

Meals and More: Over the past year, the café served nearly 40,000 meals, provided mothers-in-need with supplies like clothing, diapers and formula, and offered educational classes like CPR, car seat safety, healthy cooking and more.

Area of Focus: As food costs rise exponentially, the Community Foundation is supporting general operating costs to keep the soup kitchen's doors open.

What started out as four men walking around with coffee and donuts to feed the hungry in Belle Glade more than 30 years ago, has turned into the Lighthouse Café — the sole soup kitchen and pillar of support for its surrounding community. Today, post-pandemic and with prices increasing on everything, the need in this agricultural breadbasket has only increased. The café served nearly 3,000 more meals for the first six months of 2023 than the previous year.

"The price of groceries, the price of food has gone up," said Martha Lynn Weeks, the soup kitchen's director. Beyond the food, supplies, paper products, plates, and everything it needs to serve a meal has also increased in costs.

To make sure it could continue to serve the hungry in the Western Glades communities, the café turned to the Community Foundation for Palm Beach and Martin Counties. The foundation awarded the café a \$20,000 grant for operating costs.

"We're thankful for the support from the Community Foundation," Weeks said. "It helps us continue our mission of serving people a balanced, healthy meal."

The food insecure, the homeless, many of which suffer from mental illness and/or a disability, come to the café for a hot, nutritious meal. From Monday to Friday, it serves about 65 people for breakfast and up to 100 people for lunch. Volunteers also deliver packaged meals to those who are unable to travel.

Beyond feeding the hungry, the café works to connect those it serves with needed social services.

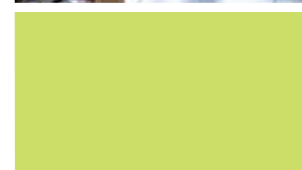
"If we can't help with a specific service, we can direct them to an agency that will help them," Weeks said. "Over the years we've been able to get several people in drug rehab programs. We help people get jobs. We feel like that's our main goal — to help people better their lives."



132,000 are food insecure
in Palm Beach County;
38,000 are children

15,000 are food insecure
in Martin County;
4,500 are children

Source: Palm Beach County Food Bank and Treasure Coast Food Bank



Steven Martine Photography

FY 2022-2023 COMPETITIVE GRANTMAKING RECIPIENTS: THRIVING COMMUNITIES FOCUS

Adopt-A Family	Florida Rural Legal Services
Aid to Victims of Domestic Abuse	Friends of Foster Children
Arts4All	Glades Initiative
BeWell PBC	Habitat for Humanity of South Palm Beach County
Boca Helping Hands	Hanley Foundation
Cancer Alliance of Help & Hope	Homeless Coalition of Palm Beach County
Catholic Charities of the Diocese of Palm Beach	House of Hope Martin County
Center for Child Counseling, Inc.	Housing Leadership Council of Palm Beach County
Center for Family Services	Lighthouse Café
Children's Case Management Organization, Inc., dba Families First of Palm Beach County	Mind & Melody
Church of the Harvest	Mission Clinic of Palm Springs, Inc.
Community Greening	Monarch Health Services
Community Partners of South Florida	Nonprofits First
CROS Ministries	Our Community Table
Diabetes Coalition of Palm Beach County	Palm Beach County Food Bank
Elizabeth H. Faulk Foundation, Inc. dba Faulk Center for Counseling	Palm Beach Harvest
Empower Healthcare	Pleasant City Family Reunion
E-Roadmap Corporation	Restoration Bridge International
Expanding and Preserving Our Cultural Heritage, Inc.	Riviera Beach Integrated Care, Inc.
Faith Hope Love Charity, Inc	Safe Space
Family Promise of North Central Palm Beach County	Spady Museum
Florence Fuller Child Development Centers, Inc.	T. Leroy Jefferson Medical Society
Florida Outreach Center for the Blind	Tabernacle UB Kinsey Center
	The ARC of PBC
	The Guatemalan Maya Center
	The Pink Queen Foundation
	United Way PBC

KEEPING KIDS *Safe*

HOBE SOUND EARLY LEARNING CENTER

Open doors for all: Founded in 1962, the center serves families in Palm Beach and Martin Counties; last year about 65% of its 200+ students received tuition assistance.

2023 Community Impact Grant: Supports an upgraded fencing and a key-card badge system that will allow for a panic button to lock-down the entire school and notifies law enforcement precisely where a serious security problem exists on school grounds for a faster response.



For generations, teachers at the Hobe Sound Early Learning Center have equipped young children to become life-long learners. Today, they also teach the kids how to stay safe in a world tinged by gun violence.

School officials must make hiding from a gunman as routine as hearing a fire alarm.

"A child hears a fire drill, they know where to go, where to line up and how to proceed," said Ashley Azzi, the center's director. "And, unfortunately, that's something that we have to normalize with the active shooter training as well."

It could be the difference between life and death for these young learners.

"You have to have the children comfortable with that because you're going to cram them in rooms that get locked down. They get crammed into the back bathroom or a hidden area," said Kiersten Alberto, the center manager. "If those children are not used to that and panicking, that alerts the intruder to where they're at."

In addition to the training, the center turned to the Community Foundation for Palm Beach and Martin Counties to upgrade its security system to address this modern-day scourge.

"We realized that we need to protect our children and our staff," she said. "The Community Foundation and their donors were very generous in helping us out."

For the families, young learners and staff, the added security measures help them focus on their mission: instilling a love of learning. That peace of mind allows the teachers and center officials to continue having life-long educational impacts.

"Research shows that about 90% of students with early learning experiences like ours go on to graduate high school with fewer behavioral problems," says Azzi. "That's really our purpose — to set these kids on a strong, safe path so they can not only start ahead, but stay ahead."

For the past 2 years, firearms have killed more children than the car accidents that used to be the leading cause.

Source: Palm Beach Post 2023



Steven Martine Photography



FY 2022-2023 COMPETITIVE GRANTMAKING RECIPIENTS: EDUCATION AND YOUTH FOCUS

Academic Restoration Plan
Bi-Wi "Because I'm Worth It!"
Int'l., Inc

Boldin Community Impact
Bound For College

Boys & Girls Clubs of Martin
County, Inc.

Boys & Girls Clubs of Palm Beach
County, Inc.

Caridad Center, Inc.

Center for Creative
Education, Inc.

City of Greenacres

Compass LGBT Community
Center

Connect to Greatness, Inc.

Delray Beach Public Library

Early Learning Coalition of Indian
River, Martin, and Okeechobee
Counties, Inc.

Education Foundation of
Martin County

Emanuel Jackson Sr. Project, Inc.

Florida State University
Foundation

Glades Youth Connection

Gold Coast Down Syndrome
Organization

Hands Together for Haitians, Inc.

Hobe Sound Early Learning
Center

HomeSafe

Inner City Innovators

Love Hope Healing

Love Serving Autism

Martin County PAL

Memory Trees

National Autism Registry, Inc

North Palm Youth Symphony

Northend Rise, Inc.

Path to College

Police Athletic League of
West Palm Beach

PRISM FL, Inc

Rico's Scholarship
Foundation, Inc.

Roots and Wings

Ruth & Norman Rales Jewish
Family Services, Inc.

Scholar Career Coaching

Spirit of Giving Network

StreetWaves Corporation

Student ACES, Inc.

Suits for Seniors, Inc

Sunflower Creative Arts

Synergy Camp

Talented Teen Club

The Banner Lake Club, Inc

The Nature Conservancy

Tykes & Teens, Inc

West Jupiter Community Group

West Palm Beach
Library Foundation

WiseTribe

YES Institute

Young Singers of the
Palm Beaches

Youth Empowered to Prosper

NONPROFIT PARTNER SPOTLIGHT

UP-SKILLING YOUTH *on the Spectrum***NATIONAL
AUTISM REGISTRY****Training Location:**

The Chocolate Spectrum, Jupiter

Sweet Skills: The chocolate shop's Sweet Inclusion apprenticeship program, started in 2017, gives youth on the autism spectrum one-on-one mentorship, professional kitchen skills, and retail training; the program allows for up to one year of work experience, totaling 936 hours.

2023 Community Impact Grant: Allows the program to expand its weekly sessions for 12 new trainees.



1 in 36 children in the U.S. has been identified with autism, and the state with the highest rate of diagnosis is Florida.

Source: Center for Disease Control

About 10 years ago, learning to bake and make chocolate was supposed to be a hobby for Valerie Herskowitz. Around the same time, Blake, her son who lives with autism, was in high school.

"He has severe challenges," she said. But he showed interest in what Herskowitz was doing in the kitchen. Soon Blake joined her in baking pastries and making chocolates. "Just the fact he was showing interest was something unbelievable."

Herskowitz figured if Blake liked it, maybe some others on the autism spectrum would also enjoy learning new skills. She started a club in her kitchen. Through word of mouth that little club has turned into The Chocolate Spectrum, a retail chocolate shop in Jupiter that is run by young people on the spectrum and is supported by Herskowitz's nonprofit organization, the National Autism Registry.

The Community Foundation awarded the organization a grant this year to help Herskowitz widen her kitchen doors to high school students who do not have special needs to work with those who do through her "Sweet Inclusion" training program. Sweet Inclusion offers culinary and life skills training, growing social and communication capabilities. More verbal students learn job skills in classes and apprenticeships, while classes for those with limited communication focus on soft skills.

About 70 trainees have gone through Herskowitz's kitchen. Herskowitz aims to grow the program and increase her trainees' visibility out at catered events or by making deliveries to help the community see what people on the autism spectrum can achieve.

"Thank you to the Community Foundation for all the support they have provided us for the past several years," Herskowitz said. "Philanthropic support for our program is more than a gift of dollars — for these young people, it's an invaluable, lifelong gift of work experience, business acumen, and self-confidence for a growing special needs population."

For trainees who have gone through the program, the impact has been nothing short of life changing. Cristian P., who has Asperger's syndrome, started working with Valerie in her home. He's now 32, the truffles manager, and a mentor instructor.

"I was taking some classes at college," Cristian said. "I had no idea what I wanted to do. I was actually a little bit depressed." He learned about The Chocolate Spectrum and decided to give it a try. "I've been here ever since and it's kind of really changed my life. I don't know what I would do if I wasn't here."



Steven Martine Photography

**FY 2022-2023 COMPETITIVE
GRANTMAKING RECIPIENTS:
ECONOMIC OPPORTUNITY FOCUS**

Dress for Success Palm Beaches

El Sol, Jupiter's Neighborhood Resource Center

Florida Atlantic University Foundation, Inc.

Friends of MacArthur Beach State Park

Habilitation Center for the Handicapped, Inc. (HabCenter)

Jeff Industries

Raymond Kravis Center

Muck City United, Inc.

Second Chance Initiative, Inc.

The 1909 Foundation

The Arc of The Glades, Inc.

The Lord's Place, Inc.

The Women's Circle

Victory Nursing, Inc.

Vita Nova, Inc.

INVESTING IN *Saving Lives*

211 HELPLINE

The Goal: Answer the call of our neighbors-in-need, connecting them to the right resources, right away



TOP 3

Mental health crises

Housing assistance

Healthcare access

Community Foundation Fund:
211 Palm Beach Treasure Coast
Endowment Fund

It's a lifeline for thousands each year — literally. And since 1972, the Community Foundation for Palm Beach and Martin Counties has helped make sure that the critical work of the 211 Helpline continues.

Back then, the Community Foundation provided a \$2,500 seed grant to lay the foundation for what was then called the Center for Information and Crisis Services. The need has only grown since. Last year, the helpline that's available 24 hours a day, seven days a week, was contacted nearly 127,000 times. More than 4,300 of those were suicide-related, and residents from Palm Beach and Martin Counties made more than 40% of those calls.

— “Of all of those requests for help, a significant number are life threatening, life-endangering calls,” said Sharon L’Herrou, CEO of the 211 Helpline. “That averages to 12 a day. We can focus our time and attention on helping these people thanks to the generosity and partnership of the Community Foundation.”

This year, the helpline turned to the Community Foundation to sustain its mission long-term by opening a \$1 million 211 Palm Beach Treasure Coast Endowment Fund. The fund allows the helpline to access the Community Foundation's financial expertise and larger institutional investment opportunities.

Protecting people, helping people, this work costs money. The 211 Helpline counts on its partnership with the Community Foundation to do it.

“We trust the Community Foundation to be able to get a better return on the investment for us,” L’Herrou said. “We know the money will be safe, and their staff and volunteers will protect our dollars. This partnership is one strategy to ensure we are here for everyone that needs us today and into the future.”



Steven Martine Photography

FY 2022-2023 COMPETITIVE COMMUNITY IMPACT GRANTMAKING SNAPSHOT

\$4.3 MILLION distributed to **116** local nonprofit organizations



48% Thriving Communities

40% Education and Youth

12% Economic Opportunity

Palm Beach County 86%

Martin County 7%

Both Counties 7%



Service area focus of grant recipients

SCHOLAR SPOTLIGHT

SCHOLARSHIP SETS *the Stage for Success*

COLIN GRAULICH

Hometown: Jupiter, FL
College:
Florida Atlantic University Class of 2022
Scholarship Fund: Harry and Bertha
Bronstein Memorial Scholarship



The Graulich family knew sending their son Colin to college would be challenging for many reasons. Not only was his brother in college, too, Colin needed extra attention thanks to his Asperger's syndrome — part of the autism spectrum disorder. What the family didn't know was how these challenges would be exacerbated when COVID-19 hit.

"The Bronstein Scholarship was tremendously important to our family as it helped us support two children in college at once — especially during the pandemic years, when unforeseen issues made finances tight," said Heather Graulich, Colin's mother.

Colin, a Dwyer High School graduate, paused to think. If he was sitting in front of the Bronsteins, what would he say?

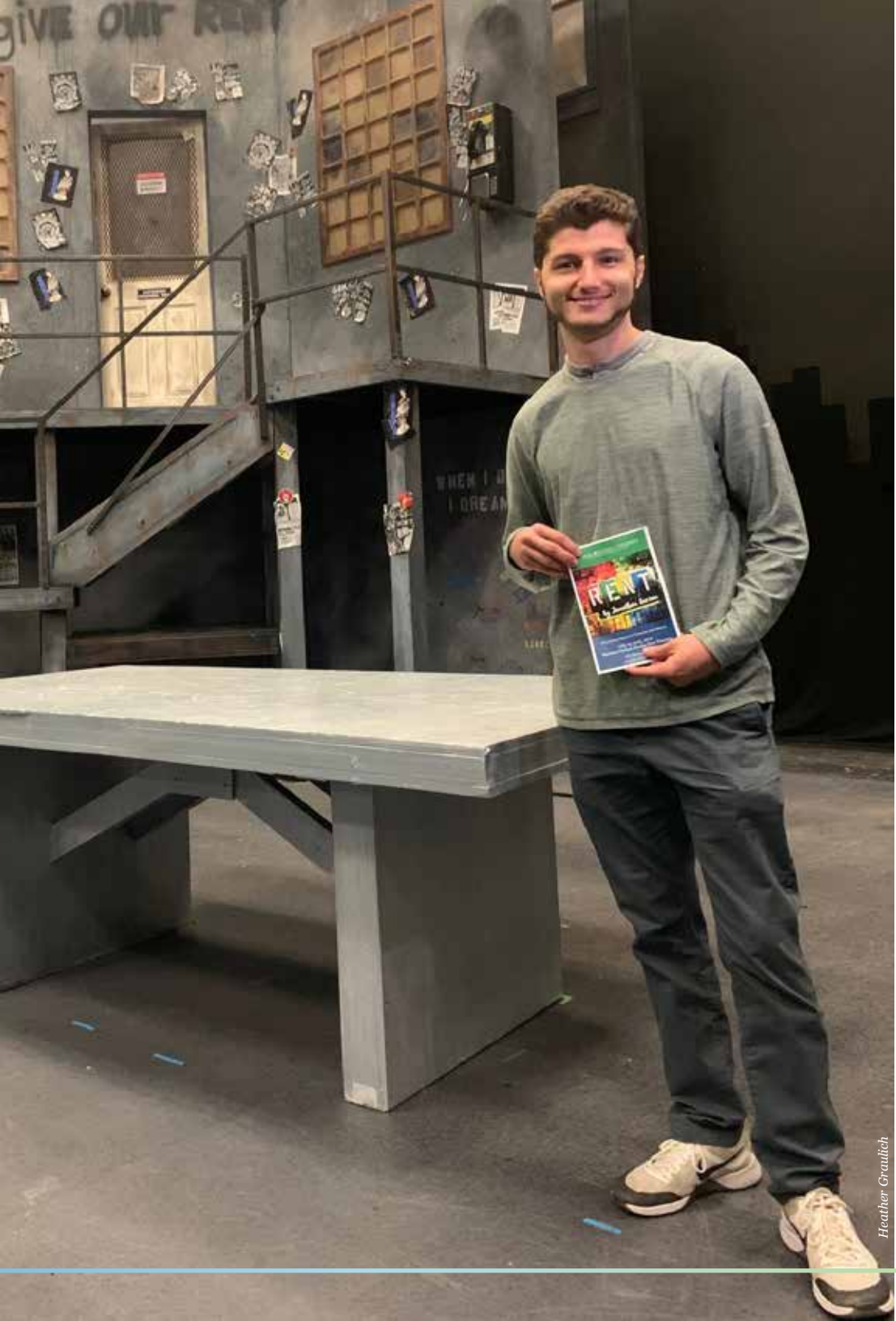
"I would say, I'm glad to meet you." The scholarship helped him through Florida Atlantic University, allowing him to do more than he even thought he could. "So, thank you."

Colin graduated cum laude with a Bachelor of Fine Arts in December 2022. He focused on theater tech, which taught him elements of set design and stage production. He spent the spring working on internship with the Lyric Opera Company of Orange County, Calif. There, he learned stage production for opera.

While working for the opera company, he connected with DJE Sounds and Lighting, a live event production company based in Lake Forest and Foothill Ranch, where he has done freelance work. They do a lot of fashion shows, Colin said. For the fall, he'll be looking for stage craft opportunities in Palm Beach County.

Beyond the financial assistance, Colin's mother said she's grateful for the opportunity the scholarship provides to students with disabilities. The Bronstein Scholarship has a designated preference for students with a disability or from a minority community.

"The Bronstein Scholarship is forever dear to us for its recognition that students with disabilities have amazing talents and gifts to share with the world," she said. "They may need a little extra support while reaching for their dreams, but most importantly they need others to believe they can excel."



FY2022-2023 COMMUNITY FOUNDATION SCHOLARSHIP PROGRAM

\$1.2 MILLION
DISTRIBUTED;
AVERAGE AWARD WAS
\$10,000

116
SCHOLARSHIPS
AWARDED

88% OF RECIPIENTS GRADUATED
WITH A GRADE POINT
AVERAGE OF 3.5+

1/2 OF RECIPIENTS ARE FIRST-
GENERATION COLLEGE STUDENTS

SINCE 1985:

\$16.8
MILLION
DISTRIBUTED

128
SCHOLARSHIP
FUNDS
SET UP BY
DONORS

2,700
TOTAL AWARDS

NONPROFIT FUNDHOLDER SPOTLIGHT

SUITING UP FUTURE *Leaders*

SUITS FOR SENIORS

The Goal: Build generational wealth for underserved high school students through mentorship, internship, and scholarship opportunities.

Service Area: 10 out of 11 Title I high schools in Palm Beach County

Community Foundation Fund: Suits for Seniors Fund

Fresh out of college, Jervonte Edmonds showed up to his first job interview eager, excited, and completely unprepared for the interviewer's first impression.

"The guy took one look at my polo shirt and khakis and told me I wasn't dressed at a professional class," Edmonds said. "I didn't have the right mindset on how I would be perceived because I didn't have anyone to teach me. That night, I went to Walmart and bought my first suit."

Edmonds said wearing a suit didn't make him stand out, but it gave him credibility — and confidence. Inspired, he founded Suits for Seniors in 2015 to support the next generation of college-bound leaders who came from humble beginnings like him.

While a new, tailored suit is part of the program's capstone, students must first complete an 8-week course that includes financial literacy, entrepreneurship, and career planning classes; mentorship pairings with successful professionals; and internships that offer real-world work experience. To date, more than 2,100 high school seniors across the county have participated; more than 70 percent completed their college degree and many have the Suits for Seniors scholarships to thank.

The goal is to grow the program from 250 students per year to 1,000, expanding into pockets of need across Southeast Florida. Edmonds created the Suits for Seniors Fund at the Community Foundation as a way to seed those long-term ambitions.

"We want the return on our investment to one day pay for the teachers we hire to run our program," he says. "We see partnering with the Community Foundation and their portfolio of generous donors as a win-win."



Photos provided by Suits for Seniors



SUPPORT SPOTLIGHT:
THE STALWART OF STUART

Supporter: Dennis "Denny" S. Hudson III
Director, Seacoast Bank

Hometown: Stuart, Florida

Community Foundation Connection:
Board member since 2016; current Treasurer of the Board; Chair of the Finance Committee

Community Foundation Fund:
The Denny & Wendy Hudson Charitable Fund

In his 20s, an exchange with a bus driver changed Denny Hudson's view of philanthropy forever. Early in his career at Seacoast Bank and newly elected campaign chair for the local United Way, Hudson organized a half-day tour to visit the organization's grantees in Martin County to help clients get to know the community better.

At the end, the driver stopped, grabbed the mic, and told the group how he'd been down on his luck — homeless — and one of the nonprofits they'd just visited had provided him with a place to stay, food, clothing, and ultimately helped him get the bus driving job two years earlier.

"It was a surprise, seminal moment that cemented for everybody on that tour how what we do as donors makes a difference," says Hudson. "I was hooked. When I was asked to join the Community Foundation's Board years later, I was equally enamored with the work we do — not just raising money but connecting with the communities and people we serve."

Generations have grown up with Seacoast Bank with Hudsons at the helm. His grandfather moved to Martin County nearly 100 years ago with the bank and understood immediately that he needed to support the local community to create loyal customers in return.

"You had to be close to the community, to know both who needed help and who could help because those connections kept us safe and uplifted us all," he says. "I have attended memorial services for customers where the third generation said had it not been for my grandfather taking a chance, their family wouldn't have the successful business it has today. That is an incredible connection, and it's the same philosophy that drives the Community Foundation."

Hudson was recruited to the Board of Directors by former Chair Sherry Barrat, who insisted he lend his leadership in support of Martin and Palm Beach Counties. His former Stuart neighbor and friend for over 40 years Julie Fisher Cummings, outgoing Chair, led through Hudson's second term. And he is energized for his last term thanks to the acumen and community commitment of incoming Chair Jeff Stoops.

"I'm excited about the future for our community with this organization, and the reason I say that is the staff and the leadership have a connection to what they are doing that transcends their jobs," Hudson says. "For me, there's no better way to give than to a foundation that will be here long after you and I are gone. In 100 years, the community and its challenges are bound to be different, but the Community Foundation will be here to keep us connected."

PARTNER SPOTLIGHT

PLANNING for *Good*

Partner: James Larschan, CFP, AEP

Firm: Financial Planner
Brokers International Financial Services, LLC

Hometown: Palm Beach Gardens, FL

Over a 40-plus year career in financial planning, James Larschan has been helping people think about the kind of legacy they want to leave in the world. For example, this year Larschan had a client who wanted to leave part of her estate to animal rescues, a cause close to her heart. But she was looking for an approach that would exist in perpetuity.

A financial planner for Brokers International, Larschan suggested she make her plans in tandem with the Community Foundation. He knew she could count on its reputation for strong oversight and connections to trustworthy organizations focused on helping furry friends.

"From experience, I saw how the Community Foundation's staff could research the nonprofits, and if one of them wasn't honoring her intent, they could easily replace it with another organization that would," says Larschan. "This gave her great peace of mind."

Charitable planning is usually a big part of his client conversations, which led Larschan to see the value of partnering with a community foundation early on in his career. For clients with sizable wealth, a donor-advised fund saves philanthropists from the hassles of administrative tasks, including reporting and other red tape often surrounding private foundations.

Many of the Community Foundation's fundholders support the charities Larschan has helped shape with his own gift of time. He volunteers on the board of Adopt-A-Family of the Palm Beaches, as well as Bella's Angels, an organization in Wellington that assists the families of children with lifelong physical disabilities.

"I have had some clients locally who wanted to give to causes far away, without even realizing there are organizations down the street who do the same work," he says. "So, I try to draw attention to the value of giving here and the Community Foundation is a great partner in that respect."

Securities and investment advisory services are offered through Brokers International Financial Services, LLC. Member SIPC. Brokers International Financial Services, LLC and Wealth Planning Consultants, are not affiliated companies.



Tracy Benson



SUPPORTER SPOTLIGHT

GENERATIONS for *Good*

Supporters: Eileen Berman and Devin Krauss

Hometown: Palm Beach, FL

Community Foundation connection:

- Fundholders (Eileen Berman and Devin Krauss Family Foundation)
- Professional advisor partner

Before Devin Krauss understood the concept of philanthropy, he knew what the gift of time meant. His mother Eileen Berman would often take Devin along on fundraising walks for the Susan G. Komen Foundation, Jewish Federation days of service, and the like.

By the time his bar mitzvah came around, Krauss jumped into his first fundraiser to help feed the elderly in his community through Morse Life. Decades later, the issue of hunger has come full circle: the mother-son duo chose to tackle hunger through the shared donor-advised fund they opened this year, the Eileen Berman and Devin Krauss Family Foundation Fund.

"We live in this great country, and it's crazy to think there are families who are hungry and suffering," said Krauss, who witnessed the community's essential needs while working at the Legal Aid Society. "If you are hungry, it affects your mental health, your productivity, your ability to concentrate in school. So, we're trying to set an example for others to steward issues that affect everybody."

Long involved with Jewish organizations, Berman wanted to partner with the Community Foundation to expand her philanthropic impact. As she entered retirement after a successful career in finance, she knew she needed help navigating not just the multitude of causes, but also the vast network of charities that could be trusted to address them.

"We want to be strategic in our giving and we want to be involved on a personal level," said Berman. "The Community Foundation is a great resource for us because their understanding of community needs showed us where we could have the greatest impact."

Since becoming more involved with the Community Foundation, Berman has also put the organization in her estate plans as a Legacy Society member. Her proudest philanthropic partnership, however, is with her son.

"Palm Beach County is important to us, this is where we made our home," says Berman. "I'm proud of the young philanthropist that Devin has become. Like me, he can have a good life, and share it with the community we care about."

FINANCIALS

STATEMENT OF FINANCIAL POSITION

ASSETS	2023	2022	2021
Cash and Cash Equivalents	14,813,503	8,618,216	7,016,508
Accounts Receivable	1,121,547	—	—
Promises to Give	5,308,032	258,860	614,994
Prepaid Expenses and Other Assets	816,612	620,391	330,130
Investments	215,595,686	213,013,161	233,614,277
Land, Building and Equipment, Net	7,026,376	7,279,289	7,522,789
TOTAL ASSETS	244,681,756	229,789,917	249,098,698
LIABILITIES			
Accounts Payable and Accrued Expenses	450,084	374,228	423,195
Agency Payable	9,409,939	6,928,803	7,029,645
Liability Under Split-Interest Agreements	1,225,097	1,199,176	1,485,468
Grants and Scholarships Payable	6,115,386	5,400,296	4,575,669
Bond Issue Payable	4,477,240	4,475,082	4,472,923
TOTAL LIABILITIES	21,677,746	18,377,585	17,986,900
NET ASSETS	223,004,010	211,412,332	231,111,798
TOTAL LIABILITIES & NET ASSETS	244,681,756	229,789,917	249,098,698

TOTAL ASSETS
\$244,681,756

ANNUAL SUPPORT
\$737,649

AVERAGE DONOR-ADVISED FUND
\$523,541

FUNDRAISING TOTAL
\$28,303,286

TOTAL GRANTED
\$16,123,204

2010	2011	2012	2013	2014	2015	2016	2017	2018	2019	2020	2021	2022	2023
\$124	\$140	\$141	\$151	\$169	\$160	\$153	\$161	\$172	\$190	\$193	\$249	\$230	\$245

TOTAL ASSETS IN \$M

CURRENT ASSET ALLOCATION

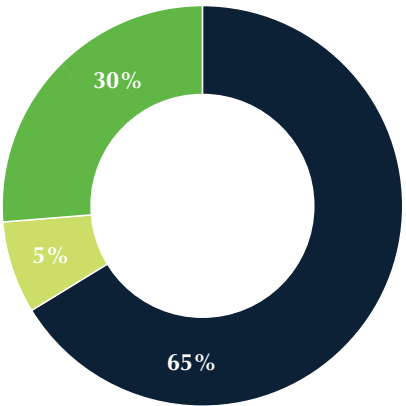
- Global Equities
- Fixed Income
- Private Markets
- Hedge Strategies
- Cash



GRANTS BY FUND TYPES

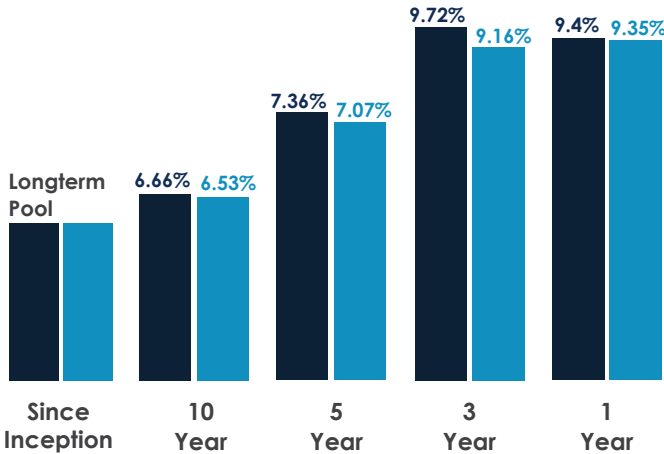
- Restricted: \$10,439,630
- Supporting Organization: \$914,100
- Unrestricted: \$4,769,474

TOTAL: \$16,123,204



INVESTMENT PERFORMANCE

- FOUNDATION
- POLICY INDEX



NET ASSETS BY FUND TYPE

- Donor-Advised: \$101,043,521
- Field of Interest: \$46,906,024
- Scholarship: \$25,894,997
- Unrestricted: \$7,476,940
- Special Purpose: \$24,955,532
- Designated: \$16,726,996

TOTAL: \$223,004,010

PHILANTHROPIC ADVISORY COUNCIL



The **Philanthropic Advisory Council (PAC)** of the Community Foundation is a regional network of accomplished professionals with expertise in tax and estate law, accounting, wealth management and financial planning. Members promote philanthropy within our two-county footprint, and exchange ideas on charitable giving issues and opportunities.

James A. Ballerano, Jr.	April Hicks	Adi Rappoport
Jeffrey Baskies	Marjorie A. Horwin**	Yesenia Realejo
Mark-Anthony Brown	Elaine A. Humphreys	Rick Reissman
Bill Burnett	Seth Kaplan	Joseph Robinson
John C. Castronuovo	Sasha A. Klein**	Tandy L. Robinson, FY24 Vice-Chair
Althea Ceasor *	Lawrence S. Klitzman**	Lisa A. Schneider, FY24 Chair
Todd Dahlstrom**	Beatrix Kondor*	
Tasha K. Dickinson	John Lacy	Mark J. Seski
Rebecca G. Doane	Chris Losquadro	Edward F. Smith III**
Robert B. Dunkin II	Thomas Marcacci**	Kristin L. Snyder*
Richard Flah**	Gina Nelson	James Tisdale**
David Gart**	Andrew M. Nerney**	Christine Vergari**
Lindsey Gerlock	Holly M. O'Neill**	Matthew Wahler**
Joshua Goldglantz	René Páez*	Suzanne S. Weston
Stacey Hallberg	Nicholas K. Rafferty	

**Term completed FY 2023 | *Term started FY 2024

LEGACY SOCIETY

Being a member of the **Legacy Society** gives you the opportunity to belong to a select group of forward-thinking donors who share a desire to leave a meaningful legacy and improve life in Palm Beach and Martin Counties. We also recognize those who at their passing leave their fund balance to the Community Foundation for our community-based grantmaking.



LEGACY SOCIETY MEMBERS

Mary Patrice and Henry Darren Alcus	John A. Callahan†
Francis Xavier F. Altobello Jr.†	Herbert C. Campau†
Anne D. Alvern	Barbara† and Robert Chapin
Helen M. Andrews†	Sally and Don W. Chester
Mildred Baldwin†	Gwendolyn M. Cohen†
Sherry and Tom Barrat	Julian Cohen†
Laurence E. Barreca†	Carol Collins
Debra and Anson M. Beard Jr.	Ann Copeland
Maura and William E. Benjamin†	Robert Crump
Eileen Berman	Judy and James R. Daleen
Martha and Thomas Blash†	Danita R. DeHaney
Helen and Robert D. Bodington†	Lore Moran Dodge
William H. Bohnett	Edward J. Dominique†
Sorrel Ross Bollet†	Margaret C. Donnelley
Milton J. Boone†	Roddey Dowd Jr.
Susan and Peter Brockway	Carol DuBois
Bertha and Harry Bronstein†	Elizabeth H. Dudley
Taunya and William J. Bryant	Kathleen M. and Thomas C. Dwyer
Michael S. Buckner	Nancy and William Earnhart†
Karen and Timothy D. Burke	George T. Elmore
Robert A. Butler†	Kati and Chris Erickson

Jamee† and Marshall Field
Jeannie and Steve Fowle
Ernest Frank†
Diane M. Freaney
Sally and Paul Gingras
Elisa and Barry H. Goldman
Helen and Richard H. Grant Jr.†
Jacquelyn Grimm
Jane and Michael Grossman
Jane and Gene J. Guttman†
Eric M. Haar
Holly W. Hadley
Kathleen E. Hager
Jane Handley†
Stephen D. Harlan†
Dorothy and Vernon A. Harrington†
Mary and Richard† Harrington
Ann P. and Thornton M.† Henry
Heather and Patrick Henry
J. Peter Hoffman†
Wendy and Dennis S. Hudson III
Karen and Bradley A. Hurlburt
Martha K. Husvar†
Claudine and James Kirkwood†
Ilse Klassen†
Laura Klein†
William F. Koch Jr.†
Marianne and William L. Kollmer
Marta R. Koltay†
Laura and Wilbur J. Kupfrian†
Helen Spencer Lanier†
Nicholas R. Leone
Richard G. Lepeska†
Lottie French Lewis†
Marcelle Hull Littell†
Heather and Mark T. Luttier

Christina M. and Benjamin S. Macfarland III
Brenda M. Magee
Daniel J. Mahoney Jr.†
Maria Mamlouk
C. Charles Marran†
Nancy and Col. John† Marshall
Marie Graber Martens†
Lilly McCarthy†
Connie McEvoy†
John T. Ladue McGinty†
Esther C. McShurley†
Alma Lu Meerdink†
Lisa and Scott Morgan
Carrie and. J.B. Murray
Elizabeth R. Neuhoff
Mabry M. Noxon†
Barbara R. Nurenberg†
Perry-Belle and Phillip D. O'Connell Sr.†
Jane and Victor Oristano†
James Orthwein Jr.
Martha and Ward C. Parker
Donald M. Paterson†
Anna Marie Peterson†
Robert M. Richter
Virgilio Rodriguez
Leon M. Rubin
Lynn Rubin-Restuccia and Phillip Restuccia
Irving R. Rutkin†
Madelyn Savarick†
Claire B. Schultz†
Allan E. Shore†
Ernest G. Simon†
Rita Singer
Gladys and James R. Smith†

Edward W. Snowdon†
Danielle and Chris Snyder
Caroline B. Sory
Susan S. Stautberg
Annette and Harold P. Stern†
Patricia Stewart†
Susan O. Taylor
Dorian Beck Trauger†
Meredith Trim and James Robo
Mildred and Alexander Valuzis†
Herbert Weber†
Frederick P. Weissman†
Anonymous (22)
†Deceased



John K. Mayer and Dr. Ivy Faske



Sally Nisberg and Sally Chester

COMMUNITY FOUNDATION EVENT SPONSORS

\$35,000+ Julie & Peter Cummings Lovelight Fund Marjorie S. Fisher Fund	\$5,000 - \$9,999 Sherry and Tom Barrat Timothy D. Burke Beth Neuhoﬀ and Steve Frank Jewish Federation of Palm Beach County Shawn M. Donnelley and Christopher M. Kelly Elizabeth 'Libby' Marshall NAMI Palm Beach County Palm Beach Illustrated Palm Beach Post / Local1Q Quantum Foundation Tandy L. Robinson / Goldman Sachs Susan S. Stautberg WLRN	Florida Power and Light Florida Atlantic University Morgan Stanley Palm Beach Kennel Club Promise Fund of Florida Lisa A. Schneider / Gunster Seacoast Bank South Florida PBS Storage Rentals of America UBS United Way
\$25,000 - \$34,999 The DiPaula Education, Empowerment, and Enrichment Fund The Kolter Group Palm Health Foundation	\$3,000 - \$4,999 Autism Project of Palm Beach County Center for Child Counseling Community Partners of South Florida Earnie Ellison, Jr. Nancy Flinn	\$1,000 - \$2,999 Carr, Riggs & Ingram, CPAs and Advisors April Hicks John S. Lacy / Merrill Chris and Amy Losquadro / Quantum Realty Advisors
\$15,000 - \$24,999 William A. Meyer		
\$10,000 - \$14,999 Findlay Galleries Northern Trust Stoops Family Foundation Susan and Peter Brockway		



ANNUAL SUPPORT

\$100,000+ The Frederick A. DeLuca Foundation	\$1,000 - \$2,499 Eileen Berman Helen and Robert D. Bodington† Brenda and Robert Fulmer Joy and Peter Funston Katherine Garlington Sally and Paul Gingras Judy and Tom Giuffrida Kathleen and T. Christopher Mara Elizabeth E. Matthews Lisa and Scott Morgan Muffie Bancroft Murray and W. Stephen Murray Jo Ann and Edward Sears Mary E. Watkins and Reuben B. Johnson III Pam G. Whitton Mickey Zitzmann Anonymous (1)	\$100 - \$499 Lauren and Geoffrey Berger Kristin and Glen Calder Barbara† and Robert Chapin Carolyn Derrico Kati and Chris Erickson Edith Hall Friedheim Dennis P. Gallon Janet R. Kuzio Thomas Lynch Mary Katherine and Al Morales Gina Nelson Judy Obernesser Linda Roman Allen and Kim Rossin Anonymous (2) †Deceased
\$50,000 - \$99,999 Aggie and Jeff Stoops	\$500 - \$999 Tom Binns Cristina B. Condon Sheree Davis Cunningham and Emmitt E. Thomas David Decker-Drane Bob Gines Joanie and Murray H. Goodman Kimberly M. Moore Susan and Richard W. Palmer Susan and Clark Schubach Virginia H. Smith Anonymous (1)	
\$25,000 - \$49,999 Julie F. and Peter D. Cummings Chip DiPaula Marmot Foundation Tsunami Foundation - Anson and Debra Beard, Jr. and Family		
\$10,000 - \$24,999 Sherry and Tom Barrat George T. Elmore The Mary Alice Fortin Foundation Ann and Charles B. Johnson Estate of Lottie French Lewis Tudor Investment Corporation		
\$5,000 - \$9,999 DVI Cardel West Palm Beach Hotel LTD Sallie G. Korman Harriet and W. Kenneth Mooney Barbara and Edward C. Trimble†		
\$2,500 - \$4,999 The Alcus Family Tandy Robinson Laurie Silvers Susan O. Taylor Cecie and E. Rodman Titcomb Jr. Thomas Tyson Bryan W. Viau		

NEW FUNDS FY 2022-2023

- 211 Palm Beach Treasure Coast Capital Campaign Fund
- 211 Palm Beach Treasure Coast Reserve Fund
- Al & Mary Katherine Morales Family Fund
- ArtSmart Investment Fund
- Bellis Family Foundation Fund
- Bissett Family Fund
- Community Mental Health Fund
- DiPaula Family Scholars Program
- Dr. Charles A. Beck, Jr. and Elisa Voelker-Beck Neurofeedback Fund
- Economic Opportunity Fund
- Eileen Berman and Devin Krauss Family Foundation Fund
- Frederick A. DeLuca Foundation Impact Fund II
- Garry & Barry Faske Twins Charitable Fund
- Julien Family Fund
- Lighthouse ArtCenter Fund
- Mark and Heather Luttier Family Fund
- Martha and Ward C. Parker Fund
- Open Hearts Fund
- Opportunity, Inc. Early Childhood Education Fund
- St. George Table Preservation Fund
- Suits for Seniors Fund
- Symphonic Band of the Palm Beaches Endowment
- The Alcus Family Endowed Scholarship Fund
- The Caitlen Macias Social Justice Fund
- The Congressman Mark Foley Scholarship for Environmental Studies Fund
- The Congressman Mark Foley Scholarship Fund in Memory of Edward J. Foley, Jr.
- Thriving Communities Fund
- Youth and Education Fund
- Anonymous (5)



Susan Waterfall, Tom Strauss, Julie Geier, and Chip DiPaula

ALL FUNDS FY 2022-2023

- 211 Palm Beach Treasure Coast Capital Campaign Fund (2023)
- 211 Palm Beach Treasure Coast Endowment Fund (1989)
- 211 Palm Beach Treasure Coast Reserve Fund (2023)
- 3 Wings Visiting Artist Fund (2022)
- Abby Gelles Knott Fund (2010)
- Achieve Palm Beach Fund (2018)
- Adele Wells Meyer Memorial Scholarship Fund (1994)
- Al & Mary Katherine Morales Family Fund (2022)
- Alexander and Mildred Valuzis Fund (2000)
- Alexander W. Dreyfoos Fund at the Community Foundation (1986)
- Alfred and Elizabeth Kay Memorial Fund (1992)
- Allan E. and Carol T. Shore Fund (1999)
- Allen C. Clark Memorial Scholarship Fund (1992)
- Allison's Gift: A Scholarship for Birthmothers (2018)
- Alma Lu Meerdink Fund (2007)
- ALS Awareness and Education Fund (1992)
- Altobello Family Donor Advised Fund (2016)
- America's Heroes Scholarship Fund (2022)
- Andrew (Rudy) Z. Hatfield Memorial Scholarship Fund (1997)
- Angelwish Fund (2020)
- Ann B. Copeland Fund (2019)
- Ann Davis Thomas Charitable Fund (2022)
- Ann E. Stewart Memorial Scholarship Fund (1984)
- Anna Marie Peterson Fund (2010)
- Arc PBC Charitable Fund (2018)
- Arthur C. Tilley Memorial Scholarship Fund (1995)
- ArtSmart Investment Fund (2023)
- Audubon of Martin County Endowment Fund (2018)
- Autism Project of Palm Beach County, Inc. Endowment Fund (2019)
- Bailey Stein Fund (2011)
- Bank of America Minority Student Scholarship (1986)
- Barbara R. Nurenberg Fund (2020)
- Barnett-Merrill Family Fund (1997)
- Barrat Family Fund (2014)
- Barrat Scholarship Fund (2022)
- Barry Harold and Elisa Rae Goldman Opportunity Fund (2017)
- Bellis Family Foundation Fund (2022)
- Bennett/Darwin Family Scholarship Fund (2011)
- Berton & Sallie Korman Family Fund (2017)
- BETR Project (2021)
- Beverly Sommer Scholarship Fund (2000)
- Bickley F. and Russell G. Simpson Fund (1998)
- Big Dan's Big Give Fund (2014)
- Bissett Family Fund (2023)
- Boardman Family Charitable Fund (2019)
- Boathouse Fund (2020)
- Boca Helping Hands Endowment Fund (2018)
- Boca Raton Museum of Art Forever Endowment Fund (2017)

- Boone Horticultural Scholarship Fund (1999)
- Boys & Girls Clubs of Martin County Great Futures Fund (2018)
- Boys & Girls Clubs of Palm Beach County Great Futures Fund (2014)
- Bradley and Carol Collins Fund (1990)
- Bradley Collins Memorial Scholarship Fund (2004)
- Briggs-Trimble Family Charitable Fund (2015)
- Brooks Koepka Foundation Fund (2019)
- Brooks Koepka Foundation Fund - FS (2019)
- Brycer Fund (2021)
- C. Charles Marran Charitable Fund (2008)
- C.S FC & Community Fund (2021)
- Cardinals-Marlins Fund (1998)
- Castronuovo Family Fund (2021)
- Celia Lipton Farris and Victor W. Farris Foundation Home Community Fund (2018)
- Center for Child Counseling Lifetime Fund (2021)
- Center for Creative Education Endowment Fund (2016)
- Chapin/Kiefer Family Fund (2000)
- Charles and Catherine Schmidt Fund (1995)
- Charles T. and Patricia Carry Stewart Fund (2015)
- Christopher N. Coppola Scholarship Fund 1 (2000)
- Claire B. Schultz Memorial Scholarship Fund (1989)
- Cliff Williams Youth Recreation Fund (1988)
- Coalition for Independent Living Options Fund (2018)
- Colonel Karl V. Price Lake Worth Community High School Air Force Jr. ROTC Scholarship Fund (1998)
- Colonial Bank Scholarship Fund (1981)
- Community Garden Green Fund (2013)
- Community Impact Fund (1972)
- Community Mental Health Fund (2023)
- Community Outreach Charitable Fund (2021)
- Community Revitalization Fund (2019)
- Community Scholarship Fund (1989)
- Connections Education Center Endowment Fund (2021)
- Conservation Florida Fund (2019)
- Courtlandt and Gina Miller Scholarship Fund (2000)
- COVID-19 Response Fund (2020)
- CROS Ministries (2017)
- Cuban Scholarship Fund (2002)
- Cultural Council of Palm Beach County Endowment Fund (2017)
- Cummings Rafferty Family Fund (2014)
- Cynthia A. Williams Fund (2016)
- Dan Smith Dairy Scholarship Fund (1993)
- Dana and Joseph Picotte Fund (2021)
- Daniel J. Mahoney, Jr. Fund (1984)
- Daniel Schmidt Legacy Fund (2020)
- Danita R. DeHaney Fund (2021)
- Danny Knichel Memorial Scholarship Fund (1989)
- Dave Yanis Scholarship Fund (2000)
- David C. Scott Fund (1986)

- David C. Scott Fund for ALS Research Fund (1986)
- Dean Speier Family Fund (2017)
- Debra & Anson M. Beard, Jr. Charitable Fund (2019)
- Delray Beach Playhouse Ernest G. Simon Scholarship Fund (2002)
- Delray Beach Public Library Forever Endowment Fund (2017)
- Denise Lynne Padgett Scholarship Fund (2001)
- Devon Kurlander Memorial Designated Fund (2022)
- Dina and Casey Cummings Family Foundation (2021)
- DiPaula Family Scholars Program (2023)
- Disaster Relief Fund (2009)
- Dixie Kirsch Family Foundation Fund (2005)
- Don Dahlberg Memorial Scholarship Fund (1983)
- Don Donahue Fund (1994)
- Donald C. McGraw Foundation Fund (2021)
- Donnell Family Charitable Fund (2020)
- Douglas Stockham Fund (2015)
- Dr. Charles A. Beck, Jr. and Elisa Voelker-Beck Neurofeedback Fund (2022)
- Dr. Dennis P. Gallon Charitable Fund (2018)
- Dr. Ray Robinson Endowment Fund (2016)
- Dr. Sidney Davidson Nursing Scholarship Fund (1997)
- Dr. William and Nancy Earnhart Fund (2021)
- Dr. William J. Bryant Family Fund (2016)
- Dreyfoos School of the Arts Foundation Fund (2015)
- Dudnyk Family Fund (2020)
- E2C Fiscal Sponsorship Fund (2021)
- Early Childhood Education Fund (2002)
- Early Learning Coalition of Palm Beach County Fund (2011)
- Early Learning Coalition of Palm Beach County Fund 2 (2011)
- Easter Seals Palm Beach, Martin and St. Lucie Fund (2004)
- Economic Opportunity Fund (2023)
- Education Foundation of Martin County Endowment Fund (2017)
- Education Foundation of Palm Beach County (2017)
- Edward Rodgers Endowment for the Urban League of Palm Beach County (2017)
- Edward T. Bedford Foundation Scholarship Fund (2009)
- Edwin P. and Patricia A. Pedersen Scholarship Fund (2018)
- Eileen Berman and Devin Krauss Family Foundation (2023)
- Elaine and Dave Darwin Fund (2002)
- Eliot and Ruth Snider Fund (2015)
- Eliza Mae Foundation Fund (2018)
- Elizabeth E. Matthews Fund (2016)
- Elizabeth Russell Neuhoﬀ Charitable Fund (2019)
- Ellen Beth Eddleman Memorial Scholarship Fund (1985)
- Eric M. Haar Legacy Fund (2019)
- Ernest Frank Scholarship Fund Created in Memory of Arlene Fulton Hammond (1997)

Esther Sheehy McShurley Scholarship Fund (2012)

Families First of Palm Beach County Foundation, Inc. (2013)

Ferro Foundation (2019)

Ferro Scholars Fund (2019)

Festival of the Arts Boca Endowment Fund (2016)

First Bank and Trust of Indiantown Directors Memorial Scholarship Fund (2000)

First Chance Fund (2018)

First Church of Christ, Scientist Building Preservation Fund (2019)

FITTEAM Foundation Fund (2018)

Flamingo Clay Studio Inc. Building Fund (2022)

Fleischer Family Charitable Fund (2018)

Florence Fuller Child Development Foundation (2018)

Florida Council on Economic Education Fund (2001)

Florida Fishing Academy (2018)

Fran Gay Memorial Scholarship Fund (2001)

Frank and Marie Cleary Memorial Scholarship Fund (2005)

Frank P. Husvar Memorial Scholarship Fund (2001)

Fred P. and Sophia D. Weissman Unrestricted Fund (1988)

Frederick A. DeLuca Foundation Impact Fund II (2022)

Frederick and Lilly McCarthy Catholic Scholarship Fund (2020)

Friends of the Gerald A. Williams, Esq. Law Academy (2012)

Friends of the Lake Worth Beach City Library Investment Fund (2022)

Frisbie Family Fund (2012)

Fulmer Family Foundation Fund (2019)

Funston Family Fund (2004)

Galadriel Peace Fund (2000)

Gale Academic Leadership Endowment Fund (2003)

Garry & Barry Faske Twins Charitable Fund (2022)

Gayle and Paul Gross Scholarship Fund (2020)

George and Arlene F. Lepeska Scholarship Fund (2008)

George and Connie McEvoy Fund for the Study of Environment and Conservation Areas (2022)

George and Wilma Elmore Fund (1986)

George W. Blabon, III Endowed Fund (2000)

Giuffrida Family Fund (1990)

Grassy Waters Conservancy Fund (2016)

Groelle Family Charitable Fund (2020)

Gulfstream Goodwill Endowment Fund (2018)

Gunster Family Endowed Scholarship Fund (2021)

Gunster Family Scholarship Fund (2021)

Gurto Family Fund (2010)

Gwen Baker Rodgers Memorial Fund (1994)

H. David Faust Memorial Scholarship Fund (1988)

H. Kirsch Family Foundation Fund (2005)

Habitat for Humanity of Palm Beach County Building for a Lifetime (2017)

Habitat for Humanity of South Palm Beach County (2018)

Hardrives of Delray, Inc. Fund (1985)

Harlan Family Florida Fund (2019)

Harrington Scholarship Fund for Martin County (2013)

Harry and Bertha Bronstein Memorial Scholarship Fund (1988)

Harry Hamilton Foundation Fund (2023)

Harry Hamilton Foundation Fund (2017)

Heather and Patrick Henry Scholarship Fund (1993)

Helen and Bob Bodington Fund (2010)

Helen Harting Abell Fund (2000)

Helen M. Andrews Charitable Lead Annuity Trust (2008)

Helen Powers Monahan Fund (2008)

Helen Powers Monahan Scholarship Fund (2009)

Hellenic Charitable Fund of Florida (2022)

Henry and Mildred Baldwin Memorial Endowment Fund (1992)

Herbert C. Campau Fund for the Arts (2020)

Herbert Weber Fund (1990)

HISPA Coffee Aficionados for Education Fund (2021)

Historical Society of Martin County (2016)

Historical Society of Palm Beach County James Ponce Endowment Fund (2017)

Holly Hadley Fund (2021)

Holy Ground PBC Opportunity Fund (2022)

HomeSafe Foster Care Recreation Fund (2017)

Honorable Eva W. Mack, First Black Mayor of West Palm Beach Scholarship Fund (1989)

Hope for the Future Fund (2016)

Inez Peppers Lovett and Charlie Ellington Scholarship Fund (1994)

Ingebord Crede Memorial Scholarship Fund (2007)

Inger and H. Loy Anderson Jr. Foundation Fund (2015)

Investment in Justice Endowment Fund (2017)

Irene Gibson Clay Scholarship Fund (2008)

Irving R. and Carol Rutkin Scholarship Fund (2021)

J. Ira and Nicki Harris Fund (1993)

J. Peter Hoffman Memorial Scholarship Fund (1999)

Jack Taylor Fund for Abused and Neglected Children (2003)

Jacqueline and William O'Gorman Fund (2022)

Jacquelyn Grimm Charitable Fund (2017)

James & Judy Daleen Fund (1996)

James B. Orthwein Jr. Family Foundation Fund (2020)

James B. Orthwein Jr. Family Foundation Legacy Fund (2020)

James H. Davis Memorial Scholarship Fund (1996)

James R. and Gladys R. Smith Fund (2008)

James Stern Family Foundation Fund (2009)

Jane and Gene Guttman Fund (2004)

Jeffrey Gutin Fund (2015)

Jenkins Family Charitable Fund (2019)

Jo Ann and Edward Sears Endowed Fund (2011)

Jo Ann and Edward Sears Fund (2011)

Joan and David Sherman Fund (2016)

John & Barbara Thomas Charitable Fund (2019)

John and Nancy Marshall Everglades Education Fund (2016)

John and Nancy Marshall Legacy Fund (2021)

John D. and Catherine T. MacArthur Foundation Fund (2011)

John D. and Catherine T. MacArthur Fund (2004)

John Giba Youth Leadership Fund (1998)

John H. Birdsall Family Fund (2004)

John S. and James L. Knight Foundation Fund (1995)

John S. Atwater Memorial Scholarship Fund (2002)

John T. Murray, M.D. Children's Health Fund (2008)

Jon M. Napierkowski Memorial Scholarship Fund (1991)

Jonathan Toppel Scholarship Fund (2022)

Jordan Camino Evert McCracken Memorial Fund (2008)

Jordan L. Kronen Charitable Fund (2021)

Joyce Lanier Milner Fund (1989)

Judy Lake Memorial Fund (1988)

Julian and Eunice S. Cohen Fund (1986)

Julian and Eunice S. Cohen Scholarship Fund (1988)

Julie F. & Peter D. Cummings Fund (2014)

Julien Family Fund (2023)

Jupiter Inlet Lighthouse Endowment Fund (2016)

K2 KIDS (2013)

Katherine and Richard Garlington Fund (2006)

Kathryn Fox Fund (2004)

Kathy Heming Scholarship Fund (1997)

Kati & Chris Erickson Charitable Fund (2017)

Kim Love Sartory Scholarship Fund (1997)

Kingsford Family Fund (2020)

Lance Corporal Ryan J. Sorensen, USMC Liberty Scholarship Fund (2006)

Landon Fund (2009)

Landon Fund II (2017)

Lauderbaugh Leadership Fund (2022)

Laura E. and Wilbur J. Kupfrian Family Foundation Fund (2006)

Laurence E. Barreca Scholarship Fund (2008)

Lawrence A. Sanders Fund to Promote Literacy (2000)

Lawrence A. Sanders Scholarship Fund for Creative Writing (2000)

Lawrence Herbert Tribute Fund (2021)

Leadership Palm Beach County Endowment Fund (2018)

Leah G. Schad Memorial Scholarship Fund (2008)

Leslie A. & Thomas A. Rosin Fund (2021)

Leslie S. Hindman International Travel Fund (2019)

Lighthouse ArtCenter Fund (2022)

Lighthouse for the Blind of the Palm Beaches Endowment Fund (2018)

Lisa Bjork Memorial Scholarship (1989)

Literacy Coalition of Palm Beach County (2019)

Loblolly Scholarship Fund (1994)

Loggerhead Marinelife Center Endowment Fund (2016)

Lorenzini Family Fund (2012)

Lottie French Lewis Fund (2010)

Lovelight Fund (2019)

Lynn Rubin-Restuccia, Phd Legacy Fund (2019)

Lyona and Dwight L. Allison, Jr. Fund (1986)

Mabry M. Noxon Scholarship Fund (2002)

MacGuire Family Fund (2014)

Marcelle Hull Littell (1999)

Margo and Ashton de Peyster Fund (2005)

Mariner Sands Chapel Fund (2004)

Marion Rossiter-Smith Fund (2011)

Marjorie Alfus Memorial Fund (2022)

Marjorie S. Fisher Endowment Fund for The Lord's Place (2019)

Marjorie S. Fisher Fund (2016)

Mark & Heather Luttier Legacy Fund (2020)

Mark and Heather Luttier Family Fund (2022)

Mark W. Cook Fund (2003)

Martha and Ward C. Parker Fund (2022)

MartinArts Endowment Fund (2016)

Mary B. Silk Memorial Fund (2001)

Mary D. Fisher Fund (2009)

Mary Jane Grant Fund (1987)

Mary McDonnell Davidson Fund (2020)

Mary R. and William C. Bowden Fund (1996)

Matthew "Bump" Mitchell/Sun-Sentinel Scholarship Fund (1989)

Matthew James Audin Memorial Scholarship Fund (1999)

Maura and William Benjamin Scholarship Fund (1984)

Maurice Cabrera Memorial Fund (2021)

Max M. and Marjorie S. Fisher Foundation Arts & Culture Fund (2018)

Max M. and Marjorie S. Fisher Foundation Endowment Fund (2018)

Melba Ruth Vickers Animal Medical Fund (2021)

Men Giving Back SPBC Fund (2020)

Mental Health America of Palm Beach County Endowment Fund (2018)

Meredith B. Trim and James L. Robo Fund (2021)

Michael Allan McIntosh Fund (1982)

Michael and Jane Grossman Fund (2016)

Michael Flagler Matthews Sports Education Fund (2006)

Michelle McGann Fund (2008)

Mickey Mandelblatt Memorial Scholarship Fund (1996)

Mordes Family Foundation Fund (2008)

Morikami Museum and Japanese Gardens (2019)

Morris Family Fund (2011)

Morse Hill Foundation Palm Beach Donor Advised Fund (2011)

Mosaic Fund (2005)

Myrna Abelman Siegel Scholarship Fund (1995)

Nan Ourisman Fund (2000)

Nancy G. Brinker Charitable Fund (2020)

Nicholas and Briggs Coleman Fund (2014)

Nicholas Megrath Scholarship Fund

Nicholas R. Leone Legacy Fund (2017)

Norman and Sarah Murphy Fund (1987)

Norton Museum of Art Charitable Fund (2019)

Olivia Foundation Fund (1995)

Open Hearts Fund (2023)

Opportunity, Inc. Early Childhood Education Fund (2023)

Paint the Future - The Armory Art Center Endowment Fund (2017)

Palm Beach Chamber of Commerce Business Scholarship Fund (2009)

Palm Beach Civic Association Stanley M. Rumbough Jr. Legacy Society (2019)

Palm Beach County Estate Planning Council Scholarship Fund (2020)

Palm Beach Kennel Club Scholarship Fund (1995)

Palm Beach Newspapers Scholarship Fund (1984)

Palm Beach State College Support (2017)

Palm Beach Zoo Wildlife Conservation Endowment (2016)

Parmet Fund (2010)

Patrick J. and Jody H. Gleason Environmental Fund (2001)

Paul L. MacAnaney Memorial Scholarship Fund (2000)

PBC Society of Plastic & Reconstructive Surgeons Scholarship Fund (1997)

PBCA Executive Committee Designated Fund (2021)

Peggy Adams Animal Rescue League Endowment Fund (2013)

Perry-Belle and Phillip D. O'Connell Pioneer Fund (2001)

Peter Jay Sharp Foundation Scholarship Fund for Conservation/ Environment Studies (2005)

Pew Family Fund (2023)

Philanthropy Tank Fund (2013)

Phillip D. O'Connell, Sr. Memorial Scholarship Fund (1988)

Phyllis Hopman Arts and Culture Fund (2004)

Phyllis Hopman Memorial Endowment Fund (2001)

Possum Long Nature Center Fund (2021)

Project Paradise Film Fund (2021)

Pundit Mulchand and Janki Devi Sharma Scholarship Fund (2004)

Quantum House Endowment Fund (2017)

R. Bruce Jones Memorial Scholarship Fund established by the Sugar Cane Growers Cooperative of Florida (1989)

Ralph O. Wood Memorial Scholarship Fund (1991)

Ray Howland Scholarship Fund (2000)

Raymond F. Kravis Center for the Performing Arts, Inc. Fund (2018)

Rear Admiral Philip A. Whitacre Scholarship Fund (2016)

Rebecca Walter Dunn Fund (2009)

Rebound and Recovery Program Fund (2022)

Reiss Family Foundation (2018)

Richard and Helen Grant Fund (2009)

Richard G. Lepeska Fund (2006)

Rita Dee Hassenfeld Fund (2003)

Robert A. Butler Estate and Dr. Richard H. Butler Fund (1996)

Robert Crump Charitable Fund (2018)

Robert D. Handley Memorial Scholarship Fund (1997)

Robert Glen Stern Scholarship Fund (2006)

Robert P. Koch Memorial Scholarship Fund (2009)

Robert Yates Charitable Fund (2007)

Roberta and Stephen R. Weiner Scholarship Fund (1994)

Roddey Dowd, Jr. Family Donor Advised Fund (2020)

Roots and Wings Bridge to Hope Education Fund (2022)

Roy J. Zuckerberg and Tara E. Kelleher Fund (2012)

Ruth Lewis Farkas Fund (1985)

Ryan Kollmer Memorial Scholarship Fund (1994)

Sadler-Hull Family Donor Advised Fund (1996)

Salem Wade Charitable Fund (2017)

Sally and Don Chester Family Fund (2016)

Sadoway Discovery Center Endowment Fund (2016)

Sandra G. Cofer Charitable Remainder Unitrust (2006)

Schramm-Brown Fund (2012)

Scott R. Goering Legacy Fund (2006)

Season to Share Fund (2018)

Sharma Family Fund (2002)

Shawn M. Donnelley Fund (2022)

Shelby Robles Memorial Fund (2020)

Sheldon B. Ackerman Fund (1977)

Sheri Reid Grant Fund (2022)

Silver Family Fund (2005)

SINCERE2000 be nice. Memorial Fund (2021)

Snyder Family Foundation Fund (2017)

Spot Pet Foundation Fund (2019)

SROA Capital Philanthropic Fund (2017)

St. George Table Preservation Fund (2023)

St. Mary's Extended Education Fund (2000)

Stautberg Family Fund (2015)

Stefanie Liberti Memorial Scholarship Fund (1998)

Stella Monchick-West Hospice Educational Fund (1999)

Stephen Madry Peck, Jr. Memorial Scholarship Fund (1990)

Steve and Jeannie Fowle Fund (2017)

Steven E. Bernstein Family Fund (2020)

Stoops Family Foundation Fund (2019)

Sue Twyford Memorial Fund (2003)

Suits for Seniors Fund (2022)

Sunburst Foundation Community Scholarship Fund (2008)

Sunny and Bonnie Knickerbocker Fund (2002)

Susan R. & John W. Sullivan Fund for Martin County (1995)

Sydelle F. and Arthur I. Meyer Scholarship Fund (2007)

Symphonia Endowment (2018)

Symphonic Band of the Palm Beaches Endowment (2023)

Take Stock in Children Palm Beach County (2018)

Talmage Charitable Fund (2018)

Tara Sheridan Scholarship Fund (2012)

Ted Trimble Scholarship Fund for Vocational Training (1995)

Teresa Palmer Family Fund (2023)

Terry Darby Memorial Scholarship Fund (1994)

The Acorn Fund (1997)

The Alcus Family Endowed Scholarship Fund (2023)

The Alcus Family Fund (2020)

The Bohnett Family Fund (2016)

The Caitlen Macias Social Justice Fund (2023)

The Charles and Elsie Gols Charitable Foundation Fund (2019)

The Congressman Mark Foley Scholarship for Environmental Studies Fund (2022)

The Congressman Mark Foley Scholarship for Journalism Education Fund (2022)

The Congressman Mark Foley Scholarship for Nursing Education Fund (2020)

The Congressman Mark Foley Scholarship for Political Science Education Fund (2022)

The Congressman Mark Foley Scholarship Fund in Memory of Edward J. Foley, Jr. (2023)

The Davis Family Fund (2015)

The de Peyster Family Fund (1995)

The Denny & Wendy Hudson Charitable Fund (2021)

The DiPaula Education, Empowerment, and Enrichment Fund (2022)

The DuBois Fund (2000)

The Elizabeth Hymer Dudley Fund (2018)

The Emmett Fund (2016)

The Environmental Fund (2002)

The Everglades Foundation (2018)

The Freddie Stebbins and James Julius Jefferson Family Fund (1999)

The Frederick A. DeLuca Foundation Scholarship Fund (2021)

The Gingras Family Fund (2013)

The Gratitude Fund (1999)

The Gubelmann Family Foundation Scholarship Fund (2000)

The Hans and Mary Stratmann Fund (1997)

The Hurlburt Family Fund (2013)

The Jackson Family Foundation Fund (2003)

The Kirkwood Fund (1994)

The Lisa L. Huertas Family Fund (2016)

The Lord's Place Endowment Fund (2018)

The Loy Anderson Miles Stone Foundation (2015)

The Macfarland Philanthropic Fund (2013)

The Morgan Family Fund (2015)

The Murray Family Fund (2014)

The Nettie Spiro Finkle Scholarship Fund (1998)

The Nick Price Fund (2002)

The Peter and Susan Brockway Fund (2016)

The Peterson Family Fund (2015)

The Promise Fund (2018)

The Promise Fund Endowment (2018)

The Promise Fund of Florida (2018)

The Rembert T. Cribb Family Fund (2014)

The Reuter Scholarship Fund (1999)

The Rodgers Family Foundation Fund (2015)

The Sampson Scholarship Fund (2021)

The Sorrel Ross Bollet Endowment Fund (1997)

The Walden Fund (1982)

The Weitz Company Scholarship Fund (2002)

Theodore Satter Memorial Scholarship Fund (1984)

Thomas A. Giesey Charitable Remainder Unitrust (1996)

Thomas and Kathleen Dwyer Legacy Fund (2021)

Thomas F. Kearney Memorial Scholarship Fund (2007)

Thomas H. Blash and Martha Blash Research Fund (2003)

Thomas Ladue McGinty Memorial Environmental Fund (1988)

Thomas William Bennett Memorial Scholarship Fund (1996)

Thriving Communities Fund (2023)

Tim and Leeann Whelan Family Fund (2021)

Timothy D. and Karen V. Burke Charitable Fund (2017)

Toppel Family Fund (1998)

TradeUP! Fund (2020)

Trimble Scholarship for Martin County Fund (1990)

United Way of Palm Beach County Endowment Fund (2017)

UNUM Fellowship Fund (2021)

Viau Family Fund (2021)

Virginia and Harvey Kimmel Family Fund (2016)

VSA Florida - Palm Beach County Fund (1994)

Walter & Adi Blum Scholarship Fund (1997)

Wendy and Royall Victor III Fund for Environment and Landmark Preservation (2002)

Wildlife Hospital Fund (2018)

William E. Benjamin, II Unrestricted Fund (1986)

William F. Koch, Jr. Fund (2014)

William Morrison Matthews Fund (1991)

Williamson Pioneer Fund (1997)

Willoughby Foundation Scholarship Fund (2021)

Women's Empowerment Scholarship Fund (2019)

WPB Together Fund (2020)

Wyckoff Family Fund (2021)

YMCA of South Palm Beach County (2018)

Young Singers of the Palm Beaches Endowment Fund (2016)

Youth and Education Fund (2023)

Youth Music Fund for Conserving Classical Music Education inspired by Alice Pyle Walker Maxey (2008)

YWCA of Palm Beach County Endowment Fund (2017)

Anonymous (18)

Save the Dates

DECEMBER 5-13

GRANT-SEEKER SESSIONS

(DELRAY BEACH, STUART, WEST PALM BEACH, BELLE GLADE)

FEBRUARY 28

11TH ANNUAL FOUNDERS LUNCHEON

MARCH 12

ANNUAL INVESTMENT BRIEFING

MARCH 27

LEGACY SOCIETY LUNCHEON

CONTACT

561.659.6800

info@cfpbmc.org

700 S. Dixie Highway, Suite 200
West Palm Beach, FL 33401

yourcommunityfoundation.org



@cfpbmc



cfpbmc



@cfpbmc



@cfpbmc



11th Annual

FOUNDERS LUNCHEON

FEBRUARY 28, 2024

Kravis Center for the Performing Arts

11:30 a.m. to 1:30 p.m.

HOPE FOR EARLY EDUCATION

Celebrating the powerful philanthropic
and nonprofit partners making a
difference locally

With nearly half of Palm Beach and Martin County third graders reading below grade level, the Community Foundation is leading Hope for Early Education alongside our donors, nonprofit partners, and community members who are dedicated to transforming children's literacy — together. Join us.

2024 McIntosh Award Recipient

George T. Elmore
Founder, Hardrives, Inc.



Tickets: \$150 / Sponsorships available

For more information:

founders.yourcommunityfoundation.org

Contact: events@cfpbmc.org or 561-659-6800